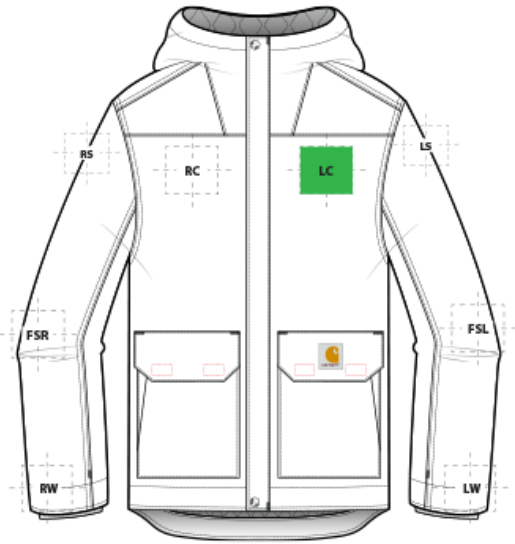


# DECORATION SPEC SHEET



CT105533 Carhartt® Super Dux<sup>#</sup> Insulated Hooded Coat



## FRONT DECORATION DIMENSIONS

<b>LC</b>	Left Chest	4" H X 4" W	Primary
<b>RC</b>	Right Chest	4" H X 4" W	

## BACK DECORATION DIMENSIONS

<b>BB</b>	Back Bottom	8"H x 14"W	
<b>UB</b>	Upper Back	6"H x 14"W	

## SLEEVE DECORATION DIMENSIONS

<b>FSL</b>	Full Sleeve Left	4"W x 14"H	
<b>FSR</b>	Full Sleeve Right	4"W x 14"H	
<b>LS</b>	Left Shoulder	4"H x 4"W	
<b>LW</b>	Left Wrist	4"H x 4"W	
<b>RS</b>	Right Shoulder	4"H x 4"W	
<b>RW</b>	Right Wrist	4"H x 4"W	

## HOOD DECORATION DIMENSIONS

<b>LHS</b>	Left Hood Side	6"Hx6"W	
<b>RHS</b>	Right Hood Side	6"Hx6"W	

# DECORATION SPEC SHEET



## CT105533 Carhartt® Super Dux<sup>#</sup> Insulated Hooded Coat

Decoration range is dependent on product, decoration method and equipment used. Allow for 1/8" per size. Sizing is based off: Adult-L, Women's-M, Youth-L, Girls-M. Please consult with your decorator or supplier.

### DECORATION TECHNIQUES

---



**EMBROIDERY**



**SCREEN PRINTING**



**HEAT TRANSFERS**

### ESSENTIAL PRODUCT INFORMATION

---

### TIPS FROM OUR EXPERTS BY DECORATION TECHNIQUE

---



#### **EMBROIDERY**

Embroidery is the art of embellishing a piece of apparel with a needle and thread or yarn creating stunning visual representations of various types of art. This is achieved by converting logos in a digitizing software and using various stitch patterns, angles, density and stitch types to create depth, movement and detail. Thread can be made from many materials. The most commonly used threads are polyester and rayon. There are also options such as metallic, cotton, nylon, silk and even Nomex thread for fire resistance. Embroidery has a very high-perceived value and is popular for use on most apparel, bags, hats, luggage, blankets and more!

**Resealing the back of embroidery on this product to retain waterproof and water-resistant properties is recommended. Water Proof/Coated Fabric with bonded barrier- 65/9 or 70/10 coated Sharp Point**



#### **SCREEN PRINTING**

An imprinting method in which the image is transferred to the fabric. Ink is squeegeed through a stenciled screen stretched over a frame and then cured in a dryer.

**Bonding catalysts may be required for stain release, water resistant/waterproof coated and nylon fabrics. For best results with non-bonded linings, specialty clamps may be required.**

# DECORATION SPEC SHEET



## CT105533 Carhartt® Super Dux<sup>#</sup> Insulated Hooded Coat



### HEAT TRANSFERS

A graphic, name and or number applied to a textile with a heat press. Great for quantities of any size, sports name and numbering, fashion, performance wear, print on demand programs and on-site decorating events.

**Heat transfers with an aggressive adhesive are required for stain release, water resistant/waterproof coated and nylon fabrics. Consult with your transfer supplier for recommendations.**