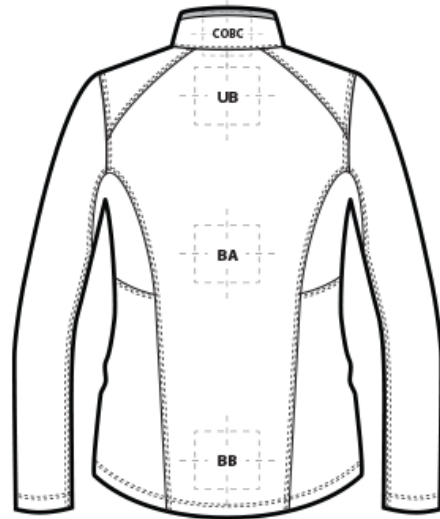
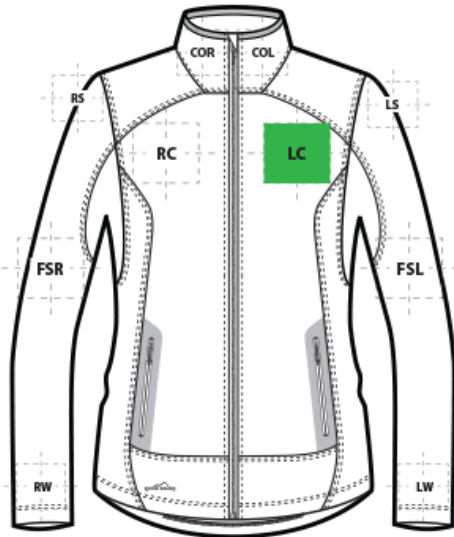


DECORATION SPEC SHEET

Eddie Bauer

EB241 Eddie Bauer® Ladies Highpoint Fleece Jacket



FRONT DECORATION DIMENSIONS

COL	Collar Left	2"H x 2"W	
COR	Collar Right	2"H x 2"W	
LC	Left Chest	4"Hx4"W	Primary
RC	Right Chest	4"Hx4"W	

BACK DECORATION DIMENSIONS

BA	Back	22"H x 14"W	
BB	Back Bottom	6"H x 14"W	
COBC	Collar Back	2"H x 6"W	
UB	Upper Back	4"H x 4"W	

SLEEVE DECORATION DIMENSIONS

FSL	Full Sleeve Left	4"H x 19"W	
FSR	Full Sleeve Right	4"H x 19"W	
LS	Left Shoulder	4"H x 4"W	
LW	Left Wrist	4"H x 4"W	
RS	Right Shoulder	4"H x 4"W	
RW	Right Wrist	4"H x 4"W	

DECORATION SPEC SHEET

Eddie Bauer

EB241 Eddie Bauer® Ladies Highpoint Fleece Jacket

Decoration range is dependent on product, decoration method and equipment used. Allow for 1/8" per size. Sizing is based off: Adult-L, Women's-M, Youth-L, Girls-M. Please consult with your decorator or supplier.

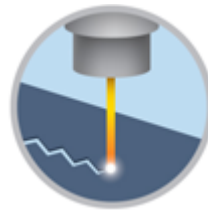
DECORATION TECHNIQUES



EMBROIDERY



HEAT TRANSFERS



LASER ETCHING

ESSENTIAL PRODUCT INFORMATION

Due to the nature of 100% polyester fabrics, special care must be taken throughout the decoration process when heat is applied for curing. Please consult with your decorator or material supplier.

Due to the nature of nylon, special care must be taken throughout the decoration process when heat is applied for curing. Please consult with your decorator or material supplier.

TIPS FROM OUR EXPERTS BY DECORATION TECHNIQUE



EMBROIDERY

Embroidery is the art of embellishing a piece of apparel with a needle and thread or yarn creating stunning visual representations of various types of art. This is achieved by converting logos in a digitizing software and using various stitch patterns, angles, density and stitch types to create depth, movement and detail. Thread can be made from many materials. The most commonly used threads are polyester and rayon. There are also options such as metallic, cotton, nylon, silk and even Nomex thread for fire resistance. Embroidery has a very high-perceived value and is popular for use on most apparel, bags, hats, luggage, blankets and more!



HEAT TRANSFERS

A graphic, name and or number applied to a textile with a heat press. Great for quantities of any size, sports name and numbering, fashion, performance wear, print on demand programs and on-site decorating events.

Heat transfers with low cure adhesive and bleed blockers are required for this product. Avoid hot-stacking when decorating 100% polyester, blends, and pigment dye fabrics.

DECORATION SPEC SHEET

Eddie Bauer

EB241 Eddie Bauer® Ladies Highpoint Fleece Jacket



LASER ETCHING

Laser etching is a decorating process that burns a pattern into the top layer of fabric, giving it a subtle tone-on-tone appearance. The image the etching creates has an upscale look that is usually the same color but several shades darker than the original fabric's color. It works well with both big or small logos.

Test etch prior to production to dial in wattage and speed. Darker colors may not give you the desired outcome. ***Please consult with your decorator, equipment, and consumable supplier.***