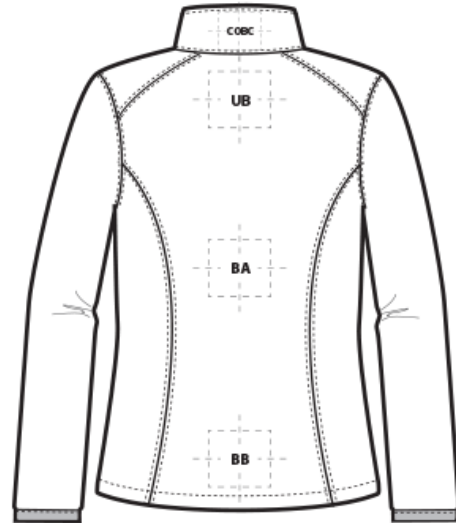
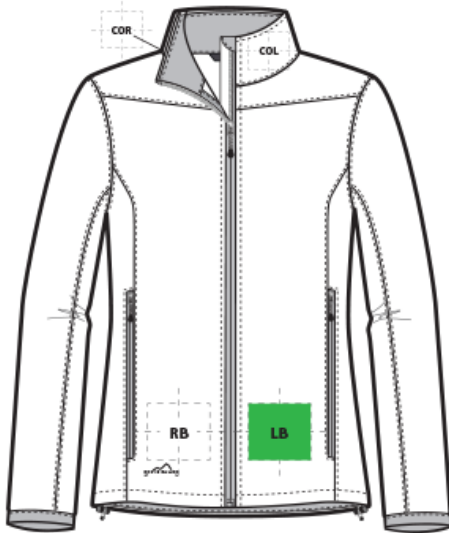


DECORATION SPEC SHEET

Eddie Bauer

EB539 Eddie Bauer® Ladies Weather-Resist Soft Shell Jacket



FRONT DECORATION DIMENSIONS

FRONT DECORATION DIMENSIONS			
COL	Collar Left	2"H x 3"W	
COR	Collar Right	2"H x 3"W	
LB	Left Bottom	2"H x 3"W	Primary
RB	Right Bottom	2"H x 3"W	

BACK DECORATION DIMENSIONS

BACK DECORATION DIMENSIONS			
BA	Back	24"H x 14"W	
BB	Back Bottom	6"H x 14"W	
COBC	Collar Back	2"H x 6"W	
UB	Upper Back	4"H x 14"W	

Decoration range is dependent on product, decoration method and equipment used. Allow for 1/8" per size. Sizing is based off: Adult-L, Women's-M, Youth-L, Girls-M. Please consult with your decorator or supplier.

DECORATION TECHNIQUES

DECORATION SPEC SHEET

Eddie Bauer

EB539 Eddie Bauer® Ladies Weather-Resist Soft Shell Jacket



EMBROIDERY



SCREEN PRINTING

ESSENTIAL PRODUCT INFORMATION

Due to the nature of 100% polyester fabrics, special care must be taken throughout the decoration process when heat is applied for curing. Please consult with your decorator or material supplier.

TIPS FROM OUR EXPERTS BY DECORATION TECHNIQUE



EMBROIDERY

Embroidery is the art of embellishing a piece of apparel with a needle and thread or yarn creating stunning visual representations of various types of art. This is achieved by converting logos in a digitizing software and using various stitch patterns, angles, density and stitch types to create depth, movement and detail. Thread can be made from many materials. The most commonly used threads are polyester and rayon. There are also options such as metallic, cotton, nylon, silk and even Nomex thread for fire resistance. Embroidery has a very high-perceived value and is popular for use on most apparel, bags, hats, luggage, blankets and more!

In order to maintain waterproof integrity, please consult with your decorator, equipment, and consumable supplier for best practices.



SCREEN PRINTING

An imprinting method in which the image is transferred to the fabric. Ink is squeegeed through a stenciled screen stretched over a frame and then cured in a dryer.

Low-cure poly inks are required. Grey or black bleed blockers may be necessary.

Do not use catch bins to avoid potential ghosting, zebra striping or dye migration.

Do not package product until completely cool. Cooling stations are recommended. Avoid hot-stacking when decorating 100% polyester, blends and pigment dye fabrics.*Please consult with your consumable supplier.*

Bonding catalysts may be required for stain release, water resistant/waterproof coated and nylon fabrics.

Please consult with your decorator, distributor or supplier for further information. For any questions, please email orders@printwear.io | Visit Printwear.io