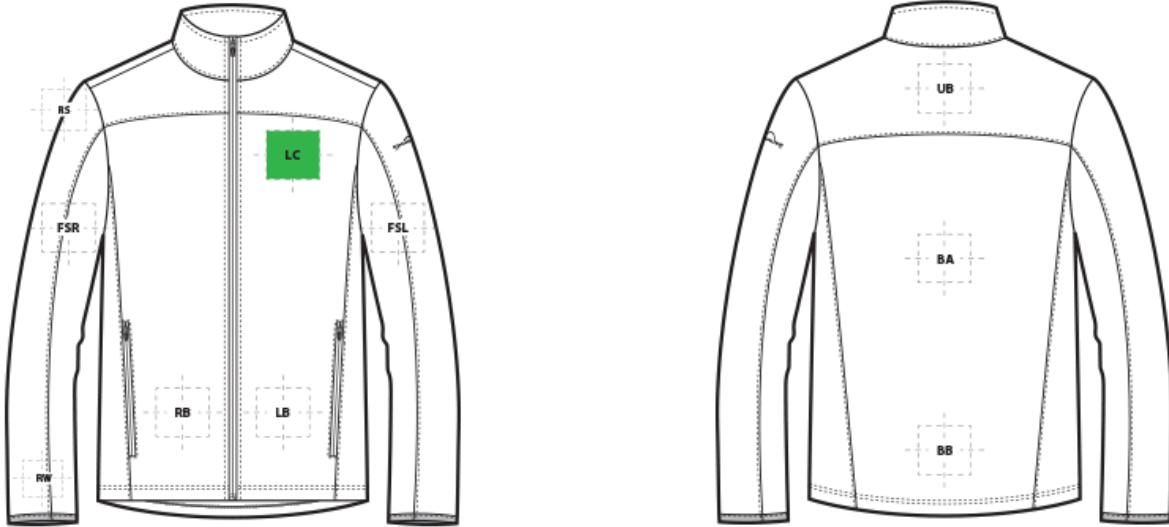


DECORATION SPEC SHEET

Eddie Bauer

EB540 Eddie Bauer® StormRepel® Soft Shell Jacket



FRONT DECORATION DIMENSIONS

LB	Left Bottom	2"H x 3"W	
LC	Left Chest	4"Hx4"W	Primary
RB	Right Bottom	2"H x 3"W	

BACK DECORATION DIMENSIONS

BA	Back	16"H x 8"W	
BB	Back Bottom	8"H x 8"W	
UB	Upper Back	7"H x 14"W	

SLEEVE DECORATION DIMENSIONS

FSL	Full Sleeve Left	18"H x 5"W	
FSR	Full Sleeve Right	18"H x 5"W	
RS	Right Shoulder	6"H x 6"W	
RW	Right Wrist	3"H x 3"W	

HOOD DECORATION DIMENSIONS

FH	Front Hood	2"H x 3"W	
IH	Inside Hood	2"H x 3"W	

DECORATION SPEC SHEET

Eddie Bauer

EB540 Eddie Bauer® StormRepel® Soft Shell Jacket

LHS	Left Hood Side	4"H x 4"W	
RHS	Right Hood Side	4"H x 4"W	

Decoration range is dependent on product, decoration method and equipment used. Allow for 1/8" per size. Sizing is based off: Adult-L, Women's-M, Youth-L, Girls-M. Please consult with your decorator or supplier.

DECORATION TECHNIQUES



EMBROIDERY



PAD PRINTING

ESSENTIAL PRODUCT INFORMATION

Due to the nature of 100% polyester fabrics, special care must be taken throughout the decoration process when heat is applied for curing. Please consult with your decorator or material supplier.

Due to the nature of water resistant coatings, special care must be taken throughout the decoration process. An ink catalyst additive or special adhesive heat transfer is required. Please consult with your decorator or material supplier.

TIPS FROM OUR EXPERTS BY DECORATION TECHNIQUE



EMBROIDERY

Embroidery is the art of embellishing a piece of apparel with a needle and thread or yarn creating stunning visual representations of various types of art. This is achieved by converting logos in a digitizing software and using various stitch patterns, angles, density and stitch types to create depth, movement and detail. Thread can be made from many materials. The most commonly used threads are polyester and rayon. There are also options such as metallic, cotton, nylon, silk and even Nomex thread for fire resistance. Embroidery has a very high-perceived value and is popular for use on most apparel, bags, hats, luggage, blankets and more!

In order to maintain waterproof integrity, please consult with your decorator, equipment, and consumable supplier for best practices.

DECORATION SPEC SHEET

Eddie Bauer

EB540 Eddie Bauer® StormRepel® Soft Shell Jacket



PAD PRINTING

Pad printing uses a soft silicone pad to transfer an image taken from a plate etched with a reversed logo, similar to a rubber stamp. Images can be very small and detailed and can be up to 5½ inches in diameter. Pad printers are capable of printing up to six colors, however most industry printers use one to two colors at most when printing on apparel. Pad printing is a popular trend for tagless label printing. The prints are soft, durable and capable of high and low volume production. Pad printing is great for sling bags, totes and other items that are difficult to decorate, as well as styles that are heat sensitive.

Please consult with your decorator, distributor or supplier for further information. For any questions, please email orders@printwear.io | Visit Printwear.io