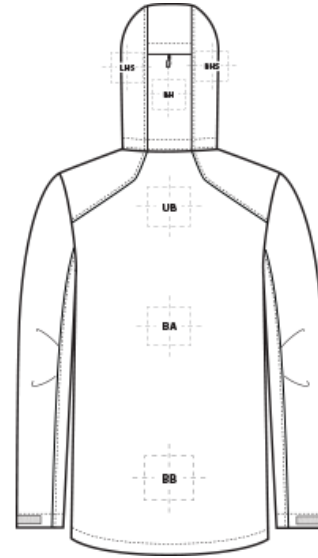
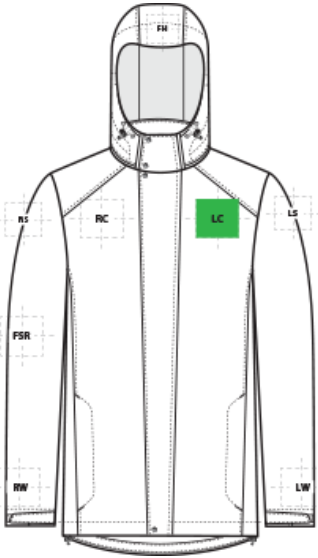


DECORATION SPEC SHEET

PORT AUTHORITY.

J123 Port Authority® All-Weather 3-in-1 Jacket



FRONT DECORATION DIMENSIONS

LC	Left Chest	4" H X 4" W	Primary
RC	Right Chest	4" H X 4" W	

BACK DECORATION DIMENSIONS

BA	Back	14" H X 14" W	
BB	Back Bottom	6" H x 14" W	
UB	Upper Back	4" H x 14" W	

SLEEVE DECORATION DIMENSIONS

FSR	Full Sleeve Right	4" W x 14" H	
LS	Left Shoulder	4" H x 4" W	
LW	Left Wrist	4" H X 4" W	
RS	Right Shoulder	4" H x 4" W	
RW	Right Wrist	4" H X 4" W	

HOOD DECORATION DIMENSIONS

BH	Back Hood	3" H x 3" W	
FH	Front Hood	3" H x 3" W	

DECORATION SPEC SHEET

PORT AUTHORITY

J123 Port Authority® All-Weather 3-in-1 Jacket

LHS	Left Hood Side	5"H x 5"W	
RHS	Right Hood Side	5"H x 5"W	

Decoration range is dependent on product, decoration method and equipment used. Allow for 1/8" per size. Sizing is based off: Adult-L, Women's-M, Youth-L, Girls-M. Please consult with your decorator or supplier.

DECORATION TECHNIQUES



EMBROIDERY



SCREEN PRINTING



HEAT TRANSFERS

ESSENTIAL PRODUCT INFORMATION

TIPS FROM OUR EXPERTS BY DECORATION TECHNIQUE



EMBROIDERY

Embroidery is the art of embellishing a piece of apparel with a needle and thread or yarn creating stunning visual representations of various types of art. This is achieved by converting logos in a digitizing software and using various stitch patterns, angles, density and stitch types to create depth, movement and detail. Thread can be made from many materials. The most commonly used threads are polyester and rayon. There are also options such as metallic, cotton, nylon, silk and even Nomex thread for fire resistance. Embroidery has a very high-perceived value and is popular for use on most apparel, bags, hats, luggage, blankets and more!

Resealing the back of embroidery on this product to retain waterproof and water-resistant properties is recommended. Water Proof/Coated Fabric with bonded barrier- 65/9 or 70/10 coated Sharp Point



SCREEN PRINTING

An imprinting method in which the image is transferred to the fabric. Ink is squeegeed through a stenciled screen stretched over a frame and then cured in a dryer.

Low-cure poly inks are required. Grey or black bleed blockers may be necessary.

DECORATION SPEC SHEET

PORT AUTHORITY

J123 Port Authority® All-Weather 3-in-1 Jacket

Avoid hot stacking when decorating 100% polyester, blends, and pigment dye fabrics.

Do not package product until completely cool. Cooling stations are recommended.

Bonding catalysts may be required for stain release, water resistant/waterproof coated and nylon fabrics. Aggressive adhesive are required for stain release, water resistant/waterproof coated and nylon fabrics. Consult with your transfer supplier for recommendations.



HEAT TRANSFERS

A graphic, name and or number applied to a textile with a heat press. Great for quantities of any size, sports name and numbering, fashion, performance wear, print on demand programs and on-site decorating events.

Heat transfers with low cure adhesive and bleed blockers are required for this product. Avoid hot stacking when decorating 100% polyester, blends, and pigment dye fabrics.

Do not package product until completely cool. Cooling stations are recommended.

Heat transfers with an aggressive adhesive are required for stain release, water resistant/waterproof coated and nylon fabrics. Consult with your transfer supplier for recommendations.