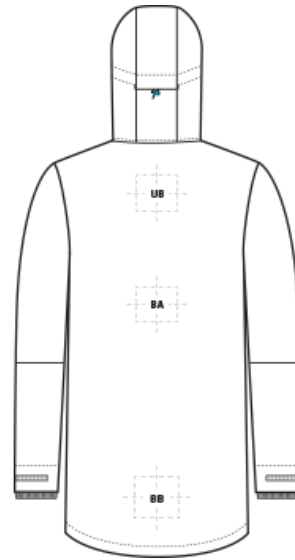
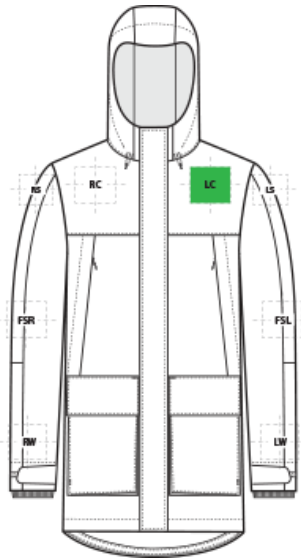


# DECORATION SPEC SHEET

PORT AUTHORITY

J363 Port Authority® Latitude Waterproof Heavyweight Parka



## FRONT DECORATION DIMENSIONS

<b>LC</b>	Left Chest	4" H X 4" W	Primary
<b>RC</b>	Right Chest	4" H X 4" W	

## BACK DECORATION DIMENSIONS

<b>BA</b>	Back	14" H X 14" W	
<b>BB</b>	Back Bottom	6" H X 14" W	
<b>UB</b>	Upper Back	4" H X 14" W	

## SLEEVE DECORATION DIMENSIONS

<b>FSL</b>	Full Sleeve Left	4"W x14"H	
<b>FSR</b>	Full Sleeve Right	4"W x14"H	
<b>LS</b>	Left Shoulder	4" H X 4" W	
<b>LW</b>	Left Wrist	4" H X 4" W	
<b>RS</b>	Right Shoulder	4" H X 4" W	
<b>RW</b>	Right Wrist	4" H X 4" W	

## HOOD DECORATION DIMENSIONS

<b>FH</b>	Front Hood	3"Hx3"W	
-----------	------------	---------	--

# DECORATION SPEC SHEET

PORT AUTHORITY

J363 Port Authority® Latitude Waterproof Heavyweight  
Parka

<b>LHS</b>	Left Hood Side	4" H X 4" W	
<b>RHS</b>	Right Hood Side	4" H X 4" W	

Decoration range is dependent on product, decoration method and equipment used. Allow for 1/8" per size. Sizing is based off: Adult-L, Women's-M, Youth-L, Girls-M. Please consult with your decorator or supplier.

## DECORATION TECHNIQUES



**EMBROIDERY**



**SCREEN PRINTING**

## ESSENTIAL PRODUCT INFORMATION

**Due to the nature of 100% polyester fabrics, special care must be taken throughout the decoration process when heat is applied for curing. Please consult with your decorator or material supplier.**

## TIPS FROM OUR EXPERTS BY DECORATION TECHNIQUE



### **EMBROIDERY**

Embroidery is the art of embellishing a piece of apparel with a needle and thread or yarn creating stunning visual representations of various types of art. This is achieved by converting logos in a digitizing software and using various stitch patterns, angles, density and stitch types to create depth, movement and detail. Thread can be made from many materials. The most commonly used threads are polyester and rayon. There are also options such as metallic, cotton, nylon, silk and even Nomex thread for fire resistance. Embroidery has a very high-perceived value and is popular for use on most apparel, bags, hats, luggage, blankets and more!

**Resealing the back of embroidery on this product to retain waterproof and water-resistant properties is recommended.**

**For better results, Magnetic or Clamp Frames may be required for better stability and max decoration range**

# DECORATION SPEC SHEET

PORT AUTHORITY.

## J363 Port Authority® Latitude Waterproof Heavyweight Parka



### SCREEN PRINTING

An imprinting method in which the image is transferred to the fabric. Ink is squeegeed through a stenciled screen stretched over a frame and then cured in a dryer.

**Bonding catalysts may be required for stain release, water resistant/waterproof coated and nylon fabrics.**

**Low-cure poly inks are required. Grey or black bleed blockers may be necessary.**

**Do not use catch bins to avoid potential ghosting, zebra striping or dye migration.**

**Do not package product until completely cool. Cooling stations are recommended.**