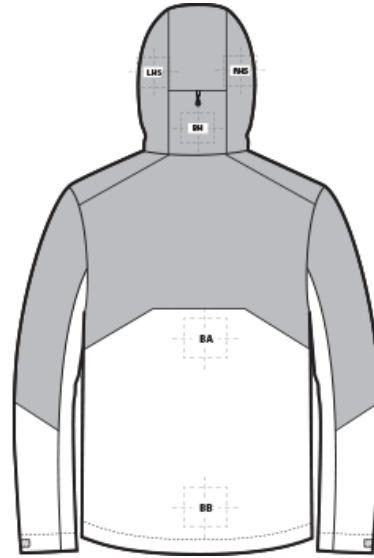
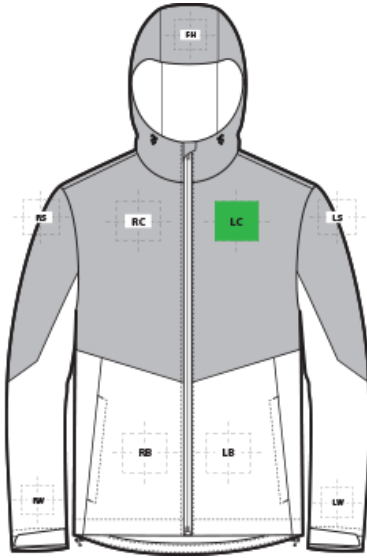


DECORATION SPEC SHEET

PORT AUTHORITY.

J406 Port Authority® Tech Rain Jacket



FRONT DECORATION DIMENSIONS

LB	Left Bottom	4"HX4"W	
LC	Left Chest	4"Hx4"W	Primary
RB	Right Bottom	4"HX4"W	
RC	Right Chest	4"Hx4"W	

BACK DECORATION DIMENSIONS

BA	Back	18"HX16"W	
BB	Back Bottom	6"HX7"W	

SLEEVE DECORATION DIMENSIONS

LS	Left Shoulder	5"HX5"W	
LW	Left Wrist	4"HX4"W	
RS	Right Shoulder	5"HX5"W	
RW	Right Wrist	4"HX4"W	

HOOD DECORATION DIMENSIONS

BH	Back Hood	3"HX3"W	
FH	Front Hood	2"HX3"W	

DECORATION SPEC SHEET

PORT AUTHORITY

J406 Port Authority® Tech Rain Jacket

LHS	Left Hood Side	8"HX3"W	
RHS	Right Hood Side	8"HX3"W	

Decoration range is dependent on product, decoration method and equipment used. Allow for 1/8" per size. Sizing is based off: Adult-L, Women's-M, Youth-L, Girls-M. Please consult with your decorator or supplier.

DECORATION TECHNIQUES



EMBROIDERY



HEAT TRANSFERS

ESSENTIAL PRODUCT INFORMATION

Due to the nature of 100% polyester fabrics, special care must be taken throughout the decoration process when heat is applied for curing. Please consult with your decorator or material supplier.

Due to the nature of water proof coatings, special care must be taken throughout the decoration process. An ink catalyst additive or special adhesive heat transfer is required. Please consult with your decorator or material supplier.

TIPS FROM OUR EXPERTS BY DECORATION TECHNIQUE



EMBROIDERY

Embroidery is the art of embellishing a piece of apparel with a needle and thread or yarn creating stunning visual representations of various types of art. This is achieved by converting logos in a digitizing software and using various stitch patterns, angles, density and stitch types to create depth, movement and detail. Thread can be made from many materials. The most commonly used threads are polyester and rayon. There are also options such as metallic, cotton, nylon, silk and even Nomex thread for fire resistance. Embroidery has a very high-perceived value and is popular for use on most apparel, bags, hats, luggage, blankets and more!

Resealing the back of embroidery on this product to retain waterproof and water-resistant properties is recommended. Water Proof/Coated Fabric with bonded barrier- 65/9 or 70/10 coated Sharp Point

DECORATION SPEC SHEET

PORT AUTHORITY.

J406 Port Authority® Tech Rain Jacket



HEAT TRANSFERS

A graphic, name and or number applied to a textile with a heat press. Great for quantities of any size, sports name and numbering, fashion, performance wear, print on demand programs and on-site decorating events.

Heat transfers with low cure adhesive and bleed blockers are required for this product. Avoid hot-stacking when decorating 100% polyester, blends, and pigment dye fabrics.