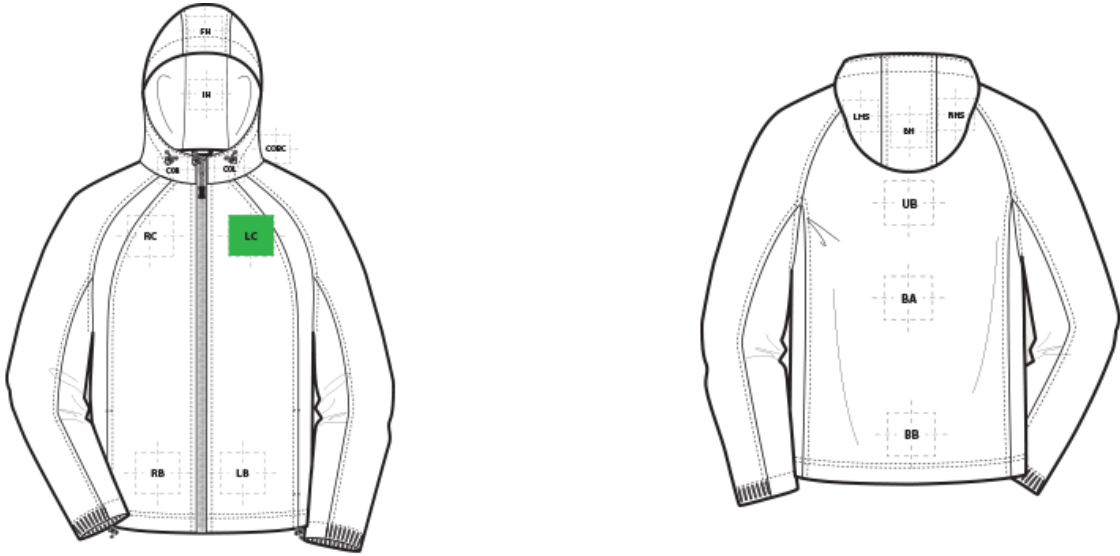


# DECORATION SPEC SHEET

**SPORT-TEK.**

## JST73 Sport-Tek® Hooded Raglan Jacket



### FRONT DECORATION DIMENSIONS

FRONT DECORATION DIMENSIONS			
<b>COL</b>	Collar Left	2"H x 4"W	
<b>COR</b>	Collar Right	2"H x 4"W	
<b>LB</b>	Left Bottom	4"H x 4"W	
<b>LC</b>	Left Chest	4"Hx4"W	Primary
<b>RB</b>	Right Bottom	4"H x 4"W	
<b>RC</b>	Right Chest	4"Hx4"W	

### BACK DECORATION DIMENSIONS

BACK DECORATION DIMENSIONS			
<b>BA</b>	Back	17"H x 17"W	
<b>BB</b>	Back Bottom	6"H x 14"W	
<b>COBC</b>	Collar Back	3"H x 3"W	
<b>UB</b>	Upper Back	6"H x 12"W	

### HOOD DECORATION DIMENSIONS

HOOD DECORATION DIMENSIONS			
<b>BH</b>	Back Hood	3"H x 3"W	
<b>FH</b>	Front Hood	3"H x 3"W	
<b>IH</b>	Inside Hood	3"H x 3"W	
<b>LHS</b>	Left Hood Side	6"H x 6"W	

# DECORATION SPEC SHEET

**SPORT-TEK.**

JST73 Sport-Tek® Hooded Raglan Jacket

<b>RHS</b>	Right Hood Side	6"H x 6"W	
------------	-----------------	-----------	--

Decoration range is dependent on product, decoration method and equipment used. Allow for 1/8" per size. Sizing is based off: Adult-L, Women's-M, Youth-L, Girls-M. Please consult with your decorator or supplier.

## DECORATION TECHNIQUES



**EMBROIDERY**



**SCREEN PRINTING**



**HEAT TRANSFERS**



**PAD PRINTING**

## ESSENTIAL PRODUCT INFORMATION

**Due to the nature of 100% polyester fabrics, special care must be taken throughout the decoration process when heat is applied for curing. Please consult with your decorator or material supplier.**

## TIPS FROM OUR EXPERTS BY DECORATION TECHNIQUE



### **EMBROIDERY**

Embroidery is the art of embellishing a piece of apparel with a needle and thread or yarn creating stunning visual representations of various types of art. This is achieved by converting logos in a digitizing software and using various stitch patterns, angles, density and stitch types to create depth, movement and detail. Thread can be made from many materials. The most commonly used threads are polyester and rayon. There are also options such as metallic, cotton, nylon, silk and even Nomex thread for fire resistance. Embroidery has a very high-perceived value and is popular for use on most apparel, bags, hats, luggage, blankets and more!

**In order to maintain waterproof integrity, please consult with your decorator, equipment, and consumable supplier for best practices.**



### **SCREEN PRINTING**

An imprinting method in which the image is transferred to the fabric. Ink is squeegeed through a stenciled screen stretched over a frame and then cured in a dryer.

**low cure low bleed, watch for lining inside**

# DECORATION SPEC SHEET

**SPORT-TEK.**

## JST73 Sport-Tek® Hooded Raglan Jacket



### HEAT TRANSFERS

A graphic, name and or number applied to a textile with a heat press. Great for quantities of any size, sports name and numbering, fashion, performance wear, print on demand programs and on-site decorating events.

**\*Please consult with your decorator, equipment, and consumable supplier.\***



### PAD PRINTING

Pad printing uses a soft silicone pad to transfer an image taken from a plate etched with a reversed logo, similar to a rubber stamp. Images can be very small and detailed and can be up to 5½ inches in diameter. Pad printers are capable of printing up to six colors, however most industry printers use one to two colors at most when printing on apparel. Pad printing is a popular trend for tagless label printing. The prints are soft, durable and capable of high and low volume production. Pad printing is great for sling bags, totes and other items that are difficult to decorate, as well as styles that are heat sensitive.

Please consult with your decorator, distributor or supplier for further information. For any questions, please email [orders@printwear.io](mailto:orders@printwear.io) | Visit [Printwear.io](http://Printwear.io)