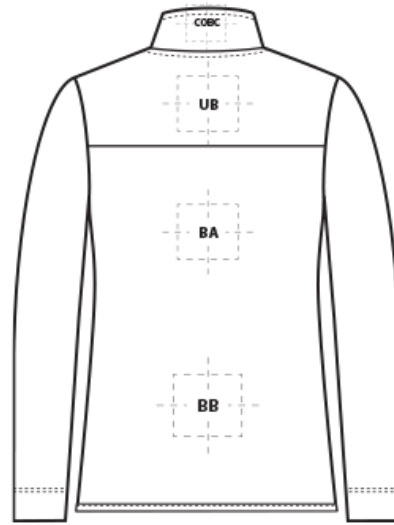
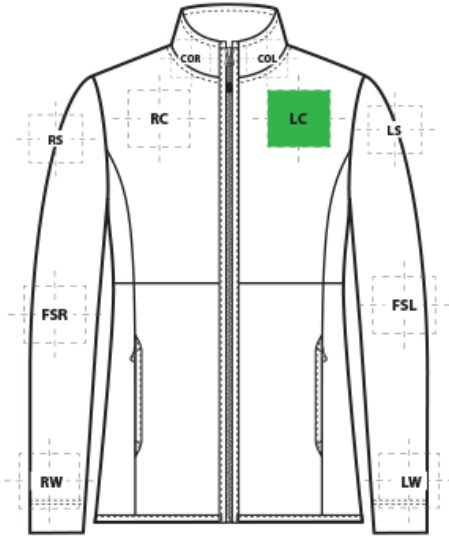


# DECORATION SPEC SHEET

PORT AUTHORITY

L110 Port Authority® Ladies Connection Fleece Jacket



## FRONT DECORATION DIMENSIONS

<b>COL</b>	Collar Left	1" H X 4" W	
<b>COR</b>	Collar Right	1" H X 4" W	
<b>LC</b>	Left Chest	4" H X 4" W	Primary
<b>RC</b>	Right Chest	4" H X 4" W	

## BACK DECORATION DIMENSIONS

<b>BA</b>	Back	10" H X 10" W	
<b>BB</b>	Back Bottom	3" H X 10" W	
<b>COBC</b>	Collar Back	1" H X 4" W	
<b>UB</b>	Upper Back	3" H X 10" W	

## SLEEVE DECORATION DIMENSIONS

<b>FSL</b>	Full Sleeve Left	4" H X 14" W	
<b>FSR</b>	Full Sleeve Right	4" H X 14" W	
<b>LS</b>	Left Shoulder	4" H X 4" W	
<b>LW</b>	Left Wrist	4" H X 4" W	
<b>RS</b>	Right Shoulder	4" H X 4" W	
<b>RW</b>	Right Wrist	4" H X 4" W	

# DECORATION SPEC SHEET

PORT AUTHORITY

## L110 Port Authority® Ladies Connection Fleece Jacket

Decoration range is dependent on product, decoration method and equipment used. Allow for 1/8" per size. Sizing is based off: Adult-L, Women's-M, Youth-L, Girls-M. Please consult with your decorator or supplier.

### DECORATION TECHNIQUES

---



**EMBROIDERY**



**HEAT TRANSFERS**

### ESSENTIAL PRODUCT INFORMATION

---

### TIPS FROM OUR EXPERTS BY DECORATION TECHNIQUE

---



#### **EMBROIDERY**

Embroidery is the art of embellishing a piece of apparel with a needle and thread or yarn creating stunning visual representations of various types of art. This is achieved by converting logos in a digitizing software and using various stitch patterns, angles, density and stitch types to create depth, movement and detail. Thread can be made from many materials. The most commonly used threads are polyester and rayon. There are also options such as metallic, cotton, nylon, silk and even Nomex thread for fire resistance. Embroidery has a very high-perceived value and is popular for use on most apparel, bags, hats, luggage, blankets and more!



#### **HEAT TRANSFERS**

A graphic, name and or number applied to a textile with a heat press. Great for quantities of any size, sports name and numbering, fashion, performance wear, print on demand programs and on-site decorating events.

**Heat transfers with low cure adhesive and bleed blockers are required for this product.**

Please consult with your decorator, distributor or supplier for further information. For any questions, please email [orders@printwear.io](mailto:orders@printwear.io) | Visit [Printwear.io](http://Printwear.io)