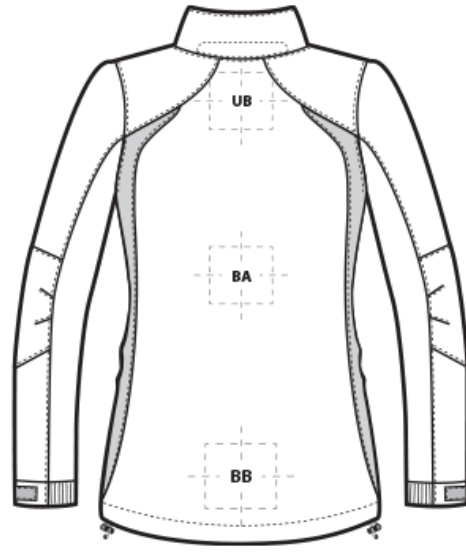
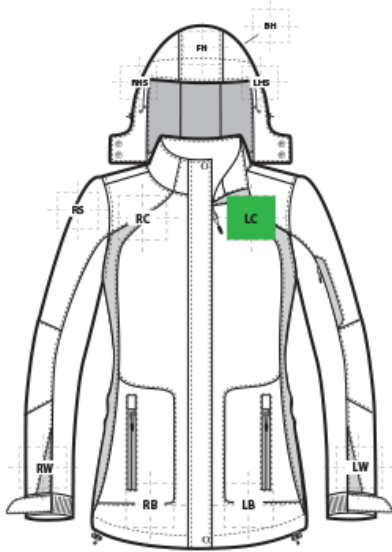


DECORATION SPEC SHEET

PORT AUTHORITY.

L304 Port Authority® Ladies All-Season II Jacket



FRONT DECORATION DIMENSIONS

LB	Left Bottom	3"HX3"W	
LC	Left Chest	4"HX4"W	Primary
RB	Right Bottom	3"HX3"W	
RC	Right Chest	4"HX4"W	

BACK DECORATION DIMENSIONS

BA	Back	14"H x 8"W	
BB	Back Bottom	6"H x 14"W	
UB	Upper Back	4"H x 8"W	

SLEEVE DECORATION DIMENSIONS

LW	Left Wrist	3"HX3"W	
RS	Right Shoulder	4"HX4"W	
RW	Right Wrist	3"HX3"W	

HOOD DECORATION DIMENSIONS

BH	Back Hood	4"H x 3"W	
FH	Front Hood	2"H x 3"W	

DECORATION SPEC SHEET

PORT AUTHORITY

L304 Port Authority® Ladies All-Season II Jacket

LHS	Left Hood Side	4"HX5"W	
RHS	Right Hood Side	4"HX5"W	

Decoration range is dependent on product, decoration method and equipment used. Allow for 1/8" per size. Sizing is based off: Adult-L, Women's-M, Youth-L, Girls-M. Please consult with your decorator or supplier.

DECORATION TECHNIQUES



EMBROIDERY



SCREEN PRINTING

ESSENTIAL PRODUCT INFORMATION

Due to the nature of nylon, special care must be taken throughout the decoration process when heat is applied for curing. Please consult with your decorator or material supplier.

Due to the nature of water proof coatings, special care must be taken throughout the decoration process. An ink catalyst additive or special adhesive heat transfer is required. Please consult with your decorator or material supplier.

TIPS FROM OUR EXPERTS BY DECORATION TECHNIQUE



EMBROIDERY

Embroidery is the art of embellishing a piece of apparel with a needle and thread or yarn creating stunning visual representations of various types of art. This is achieved by converting logos in a digitizing software and using various stitch patterns, angles, density and stitch types to create depth, movement and detail. Thread can be made from many materials. The most commonly used threads are polyester and rayon. There are also options such as metallic, cotton, nylon, silk and even Nomex thread for fire resistance. Embroidery has a very high-perceived value and is popular for use on most apparel, bags, hats, luggage, blankets and more!

In order to maintain waterproof integrity, please consult with your decorator, equipment, and consumable supplier for best practices. Water Proof/Coated Fabric with bonded barrier- 65/9 or 70/10 coated Sharp Point

DECORATION SPEC SHEET

PORT AUTHORITY.

L304 Port Authority® Ladies All-Season II Jacket



SCREEN PRINTING

An imprinting method in which the image is transferred to the fabric. Ink is squeegeed through a stenciled screen stretched over a frame and then cured in a dryer.

Low-cure poly inks are required. Grey or black bleed blockers may be necessary. Bonding catalysts may be required for stain release, water resistant/waterproof coated and nylon fabrics.