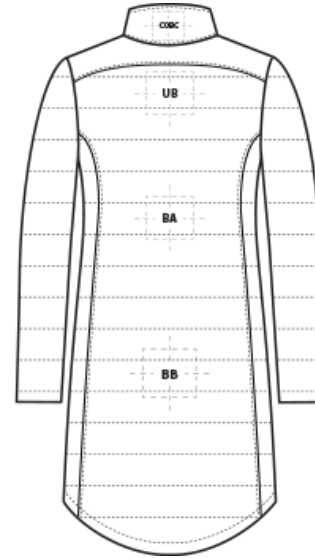
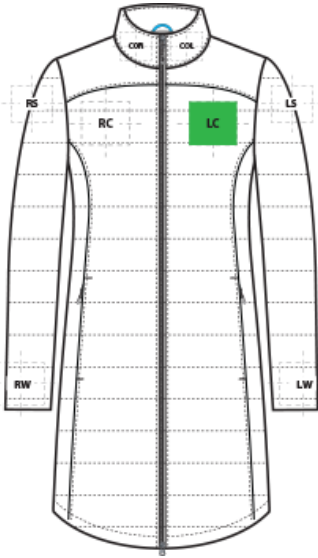


DECORATION SPEC SHEET

PORT AUTHORITY

L365 Port Authority® Ladies Horizon Puffy Long Jacket



FRONT DECORATION DIMENSIONS

FRONT DECORATION DIMENSIONS			
COL	Collar Left	1" H X 4" W	
COR	Collar Right	1" H X 4" W	
LC	Left Chest	4" H X 4" W	Primary
RC	Right Chest	4" H X 4" W	

BACK DECORATION DIMENSIONS

BACK DECORATION DIMENSIONS			
BA	Back	12" H X 14" W	
BB	Back Bottom	6" H X 14" W	
COBC	Collar Back	1" H X 4" W	
UB	Upper Back	4" H X 14" W	

SLEEVE DECORATION DIMENSIONS

SLEEVE DECORATION DIMENSIONS			
LS	Left Shoulder	4" H X 4" W	
LW	Left Wrist	4" H X 4" W	
RS	Right Shoulder	4" H X 4" W	
RW	Right Wrist	4" H X 4" W	

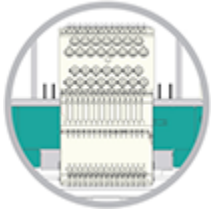
Decoration range is dependent on product, decoration method and equipment used. Allow for 1/8" per size. Sizing is based off: Adult-L, Women's-M, Youth-L, Girls-M. Please consult with your decorator or supplier.

DECORATION SPEC SHEET

PORT AUTHORITY

L365 Port Authority® Ladies Horizon Puffy Long Jacket

DECORATION TECHNIQUES



EMBROIDERY

ESSENTIAL PRODUCT INFORMATION

Due to the nature of 100% polyester fabrics, special care must be taken throughout the decoration process when heat is applied for curing. Please consult with your decorator or material supplier.

TIPS FROM OUR EXPERTS BY DECORATION TECHNIQUE



EMBROIDERY

Embroidery is the art of embellishing a piece of apparel with a needle and thread or yarn creating stunning visual representations of various types of art. This is achieved by converting logos in a digitizing software and using various stitch patterns, angles, density and stitch types to create depth, movement and detail. Thread can be made from many materials. The most commonly used threads are polyester and rayon. There are also options such as metallic, cotton, nylon, silk and even Nomex thread for fire resistance. Embroidery has a very high-perceived value and is popular for use on most apparel, bags, hats, luggage, blankets and more!

Please consult with your decorator, distributor or supplier for further information. For any questions, please email orders@printwear.io | Visit Printwear.io