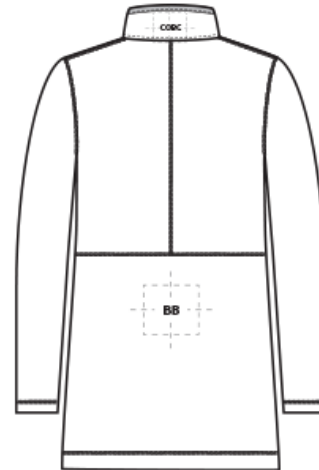
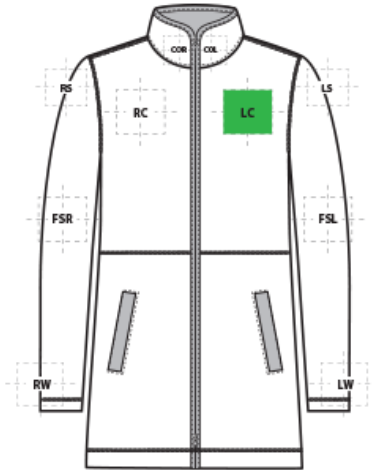


# DECORATION SPEC SHEET

PORT AUTHORITY.

## L425 Port Authority® Ladies Arc Sweater Fleece Long Jacket



### FRONT DECORATION DIMENSIONS

FRONT DECORATION DIMENSIONS			
<b>COL</b>	Collar Left	1" H X 4" W	
<b>COR</b>	Collar Right	1" H X 4" W	
<b>LC</b>	Left Chest	4" H X 4" W	Primary
<b>RC</b>	Right Chest	4" H X 4" W	

### BACK DECORATION DIMENSIONS

BACK DECORATION DIMENSIONS			
<b>BB</b>	Back Bottom	4" H X 10" W	
<b>COBC</b>	Collar Back	1" H X 4" W	

### SLEEVE DECORATION DIMENSIONS

SLEEVE DECORATION DIMENSIONS			
<b>FSL</b>	Full Sleeve Left	4" W x 14" H	
<b>FSR</b>	Full Sleeve Right	4" W x 14" H	
<b>LS</b>	Left Shoulder	4" H X 4" W	
<b>LW</b>	Left Wrist	4" H X 4" W	
<b>RS</b>	Right Shoulder	4" H X 4" W	
<b>RW</b>	Right Wrist	4" H X 4" W	

Decoration range is dependent on product, decoration method and equipment used. Allow for 1/8" per size. Sizing is based off: Adult-L, Women's-M, Youth-L, Girls-M. Please consult with your decorator or supplier.

# DECORATION SPEC SHEET

PORT AUTHORITY

L425 Port Authority® Ladies Arc Sweater Fleece Long Jacket

## DECORATION TECHNIQUES

---



EMBROIDERY



HEAT TRANSFERS

## ESSENTIAL PRODUCT INFORMATION

---

**Due to the nature of 100% polyester fabrics, special care must be taken throughout the decoration process when heat is applied for curing. Please consult with your decorator or material supplier.**

## TIPS FROM OUR EXPERTS BY DECORATION TECHNIQUE

---



### EMBROIDERY

Embroidery is the art of embellishing a piece of apparel with a needle and thread or yarn creating stunning visual representations of various types of art. This is achieved by converting logos in a digitizing software and using various stitch patterns, angles, density and stitch types to create depth, movement and detail. Thread can be made from many materials. The most commonly used threads are polyester and rayon. There are also options such as metallic, cotton, nylon, silk and even Nomex thread for fire resistance. Embroidery has a very high-perceived value and is popular for use on most apparel, bags, hats, luggage, blankets and more!

**Follow your standard equipment and consumables guidelines for this product and fabric.**



### HEAT TRANSFERS

A graphic, name and or number applied to a textile with a heat press. Great for quantities of any size, sports name and numbering, fashion, performance wear, print on demand programs and on-site decorating events.

**Heat transfers with low cure adhesive and bleed blockers are required for this product.**

**Avoid hot stacking when decorating 100% polyester, blends, and pigment dye fabrics.**

# DECORATION SPEC SHEET

PORT AUTHORITY.

L425 Port Authority® Ladies Arc Sweater Fleece Long  
Jacket

**Do not package product until completely cool. Cooling stations are recommended.**