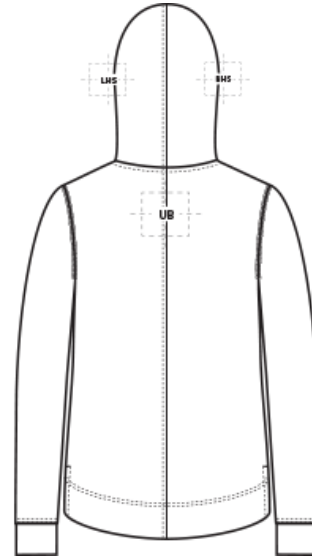
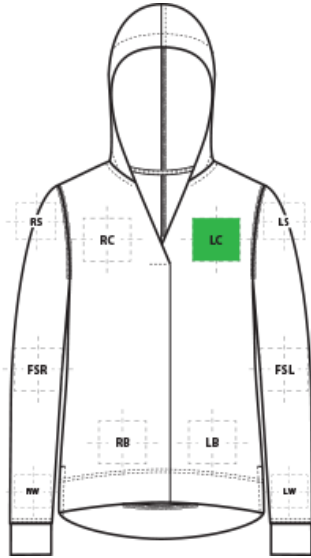


DECORATION SPEC SHEET

PORT AUTHORITY.

LK826 Port Authority® Ladies Microterry Pullover Hoodie



FRONT DECORATION DIMENSIONS

LB	Left Bottom	4"HX4"W	
LC	Left Chest	4"H x 4"W	Primary
RB	Right Bottom	4"HX4"W	
RC	Right Chest	4"H x 4"W	

BACK DECORATION DIMENSIONS

UB	Upper Back	4"H x 14"W	
-----------	------------	------------	--

SLEEVE DECORATION DIMENSIONS

FSL	Full Sleeve Left	4"H x 14"W	
FSR	Full Sleeve Right	4"H x 14"W	
LS	Left Shoulder	4"H x 14"W	
LW	Left Wrist	4"H x 14"W	
RS	Right Shoulder	4"H x 14"W	
RW	Right Wrist	4"H x 14"W	

HOOD DECORATION DIMENSIONS

LHS	Left Hood Side	6"H x 6"W	
------------	----------------	-----------	--

DECORATION SPEC SHEET

PORT AUTHORITY

LK826 Port Authority® Ladies Microterry Pullover Hoodie

RHS	Right Hood Side	6"H x 6"W	
-----	-----------------	-----------	--

Decoration range is dependent on product, decoration method and equipment used. Allow for 1/8" per size. Sizing is based off: Adult-L, Women's-M, Youth-L, Girls-M. Please consult with your decorator or supplier.

DECORATION TECHNIQUES



EMBROIDERY



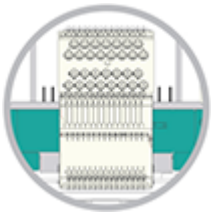
SCREEN PRINTING



HEAT TRANSFERS

ESSENTIAL PRODUCT INFORMATION

TIPS FROM OUR EXPERTS BY DECORATION TECHNIQUE



EMBROIDERY

Embroidery is the art of embellishing a piece of apparel with a needle and thread or yarn creating stunning visual representations of various types of art. This is achieved by converting logos in a digitizing software and using various stitch patterns, angles, density and stitch types to create depth, movement and detail. Thread can be made from many materials. The most commonly used threads are polyester and rayon. There are also options such as metallic, cotton, nylon, silk and even Nomex thread for fire resistance. Embroidery has a very high-perceived value and is popular for use on most apparel, bags, hats, luggage, blankets and more!

Follow your standard equipment and consumables guidelines for this product and fabric.



SCREEN PRINTING

An imprinting method in which the image is transferred to the fabric. Ink is squeegeed through a stenciled screen stretched over a frame and then cured in a dryer.

Low-cure poly inks are required. Grey or black bleed blockers may be necessary.

Stretch additives may be needed for high-stretch fabrics.

DECORATION SPEC SHEET

PORT AUTHORITY.

LK826 Port Authority® Ladies Microterry Pullover Hoodie



HEAT TRANSFERS

A graphic, name and or number applied to a textile with a heat press. Great for quantities of any size, sports name and numbering, fashion, performance wear, print on demand programs and on-site decorating events.

Heat transfers with low cure adhesive and bleed blockers are required for this product.