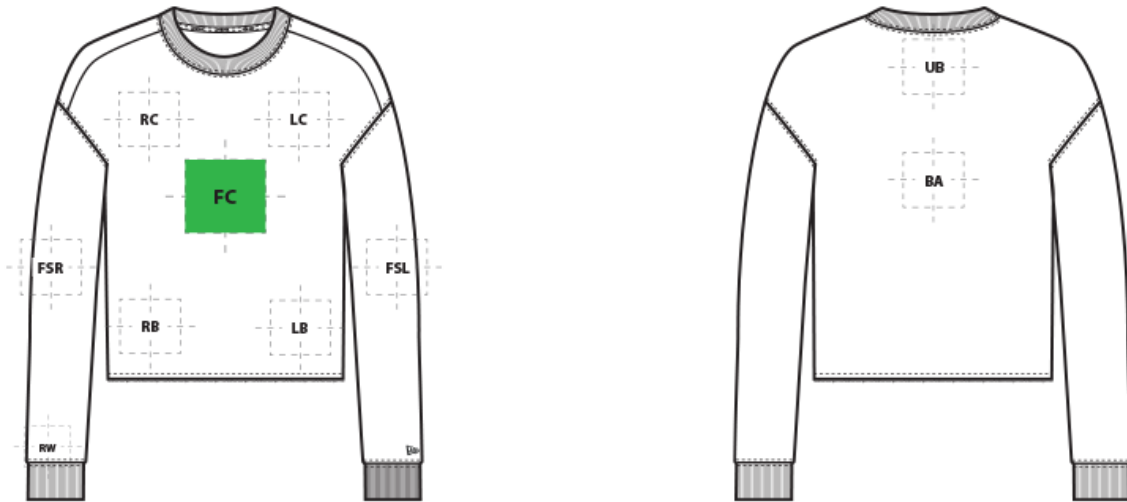


# DECORATION SPEC SHEET



## LNEA514 New Era® Ladies Tri-Blend Fleece Crop Crew



### FRONT DECORATION DIMENSIONS

FRONT DECORATION DIMENSIONS			
<b>FC</b>	Full Chest	10" H x 10" W	Primary
<b>LB</b>	Left Bottom	4"Hx4"W	
<b>LC</b>	Left Chest	4"H x 4"W	
<b>RB</b>	Right Bottom	4"Hx4"W	
<b>RC</b>	Right Chest	4"H x 4"W	
<b>TH</b>	Top Hood	4"H x 4"W	

### BACK DECORATION DIMENSIONS

BACK DECORATION DIMENSIONS			
<b>BA</b>	Back	12"H x 12"W	
<b>UB</b>	Upper Back	4"H x 12"W	

### SLEEVE DECORATION DIMENSIONS

SLEEVE DECORATION DIMENSIONS			
<b>FSL</b>	Full Sleeve Left	4"H x 10"W	
<b>FSR</b>	Full Sleeve Right	4"H x 10"W	
<b>LW</b>	Left Wrist	4"H x 4"W	
<b>RW</b>	Right Wrist	4"H x 4"W	

### HOOD DECORATION DIMENSIONS

# DECORATION SPEC SHEET



## LNEA514 New Era® Ladies Tri-Blend Fleece Crop Crew

<b>BH</b>	Back Hood	4"H x 4"W	
<b>FH</b>	Front Hood	4"H x 4"W	
<b>LHS</b>	Left Hood Side	5"H x 5"W	
<b>RHS</b>	Right Hood Side	5"H x 5"W	

Decoration range is dependent on product, decoration method and equipment used. Allow for 1/8" per size. Sizing is based off: Adult-L, Women's-M, Youth-L, Girls-M. Please consult with your decorator or supplier.

### DECORATION TECHNIQUES



EMBROIDERY



SCREEN PRINTING



HEAT TRANSFERS



DIGITAL TEXTILE PRINTING (DTG)

### ESSENTIAL PRODUCT INFORMATION

Due to the nature of tri blends, special care must be taken throughout the decoration process when heat is applied for curing. Please consult with your decorator or material supplier.

### TIPS FROM OUR EXPERTS BY DECORATION TECHNIQUE



#### EMBROIDERY

Embroidery is the art of embellishing a piece of apparel with a needle and thread or yarn creating stunning visual representations of various types of art. This is achieved by converting logos in a digitizing software and using various stitch patterns, angles, density and stitch types to create depth, movement and detail. Thread can be made from many materials. The most commonly used threads are polyester and rayon. There are also options such as metallic, cotton, nylon, silk and even Nomex thread for fire resistance. Embroidery has a very high-perceived value and is popular for use on most apparel, bags, hats, luggage, blankets and more!

**Follow your standard equipment and consumables guidelines for this product and fabric.**

# DECORATION SPEC SHEET



## LNEA514 New Era® Ladies Tri-Blend Fleece Crop Crew



### SCREEN PRINTING

An imprinting method in which the image is transferred to the fabric. Ink is squeegeed through a stenciled screen stretched over a frame and then cured in a dryer.

**Low Cure ink, Bleed Blockers needed, \*Please consult with your decorator, equipment, and consumable supplier.\***



### HEAT TRANSFERS

A graphic, name and or number applied to a textile with a heat press. Great for quantities of any size, sports name and numbering, fashion, performance wear, print on demand programs and on-site decorating events.

**Low Cure Transfer needed, \*Please consult with your decorator, equipment, and consumable supplier.\***



### DIGITAL TEXTILE PRINTING (DTG)

Direct to garment (DTG) is the art of printing a graphic directly onto a piece of apparel using digital ink jet technology. A DTG Printer is similar to a large ink jet printer that uses specialized inks and garment pre-treatments that allow the ink to adhere and stay vibrant. This decoration method is ideal for art that is designed in full color with fades, shadows, gradients, high detail and photo realistic elements. DTG is primarily used on cotton fabrics, however recent advancements in technology have made printing on cotton/poly blends and 100% polyester possible.