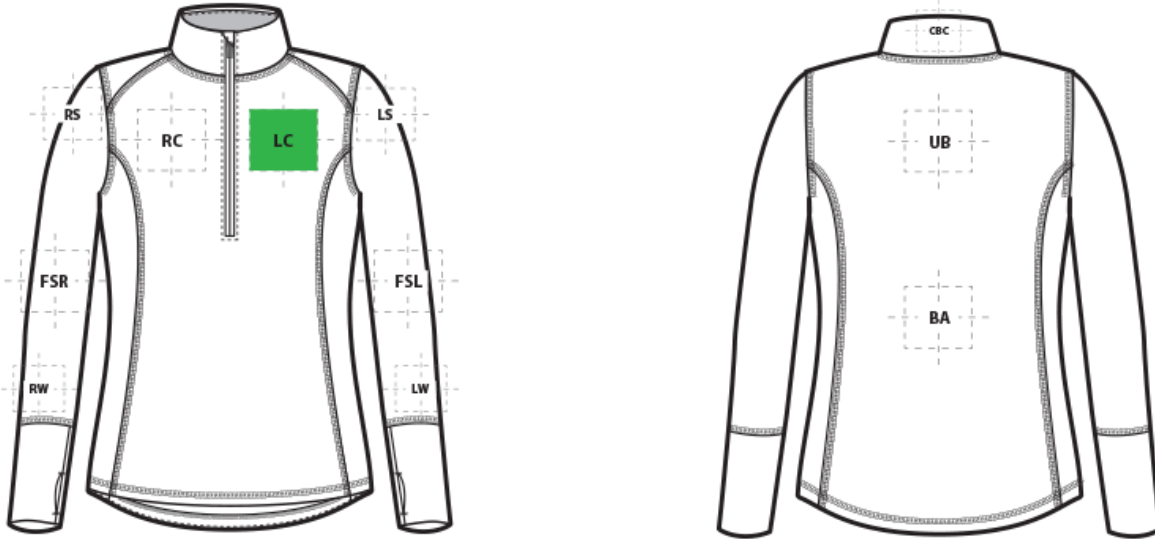


# DECORATION SPEC SHEET

**SPORT-TEK.**

LST855 Sport-Tek® Ladies Sport-Wick® Stretch Reflective Heather 1/2-Zip Pullover



## FRONT DECORATION DIMENSIONS

<b>LC</b>	Left Chest	4"H x 4"W	Primary
<b>RC</b>	Right Chest	4"H x 4"W	

## BACK DECORATION DIMENSIONS

<b>BA</b>	Back	22"H x 12"W	
<b>CBC</b>	Collar Back Center	2"H x 6"W	
<b>UB</b>	Upper Back	10"H x 12"W	

## SLEEVE DECORATION DIMENSIONS

<b>FSL</b>	Full Sleeve Left	4"H x 20"W	
<b>FSR</b>	Full Sleeve Right	4"H x 20"W	
<b>LS</b>	Left Shoulder	4"H x 4"W	
<b>LW</b>	Left Wrist	2"H x 2"W	
<b>RS</b>	Right Shoulder	4"H x 4"W	
<b>RW</b>	Right Wrist	2"H x 2"W	

Decoration range is dependent on product, decoration method and equipment used. Allow for 1/8" per size. Sizing is based off: Adult-L, Women's-M, Youth-L, Girls-M. Please consult with your decorator or supplier.

# DECORATION SPEC SHEET

**SPORT-TEK.**

LST855 Sport-Tek® Ladies Sport-Wick® Stretch  
Reflective Heather 1/2-Zip Pullover

## DECORATION TECHNIQUES



**EMBROIDERY**



**HEAT TRANSFERS**



**PAD PRINTING**

## ESSENTIAL PRODUCT INFORMATION

**Due to the nature of 100% polyester fabrics, special care must be taken throughout the decoration process when heat is applied for curing. Please consult with your decorator or material supplier.**

**Due to the nature of nylon, special care must be taken throughout the decoration process when heat is applied for curing. Please consult with your decorator or material supplier.**

## TIPS FROM OUR EXPERTS BY DECORATION TECHNIQUE



### **EMBROIDERY**

Embroidery is the art of embellishing a piece of apparel with a needle and thread or yarn creating stunning visual representations of various types of art. This is achieved by converting logos in a digitizing software and using various stitch patterns, angles, density and stitch types to create depth, movement and detail. Thread can be made from many materials. The most commonly used threads are polyester and rayon. There are also options such as metallic, cotton, nylon, silk and even Nomex thread for fire resistance. Embroidery has a very high-perceived value and is popular for use on most apparel, bags, hats, luggage, blankets and more!



### **HEAT TRANSFERS**

A graphic, name and or number applied to a textile with a heat press. Great for quantities of any size, sports name and numbering, fashion, performance wear, print on demand programs and on-site decorating events.

**Low Cure Transfer needed, \*Please consult with your decorator, equipment, and consumable supplier.\***

# DECORATION SPEC SHEET

**SPORT-TEK.**

## LST855 Sport-Tek® Ladies Sport-Wick® Stretch Reflective Heather 1/2-Zip Pullover



### **PAD PRINTING**

Pad printing uses a soft silicone pad to transfer an image taken from a plate etched with a reversed logo, similar to a rubber stamp. Images can be very small and detailed and can be up to 5½ inches in diameter. Pad printers are capable of printing up to six colors, however most industry printers use one to two colors at most when printing on apparel. Pad printing is a popular trend for tagless label printing. The prints are soft, durable and capable of high and low volume production. Pad printing is great for sling bags, totes and other items that are difficult to decorate, as well as styles that are heat sensitive.

Please consult with your decorator, distributor or supplier for further information. For any questions, please email [orders@printwear.io](mailto:orders@printwear.io) | Visit [Printwear.io](http://Printwear.io)