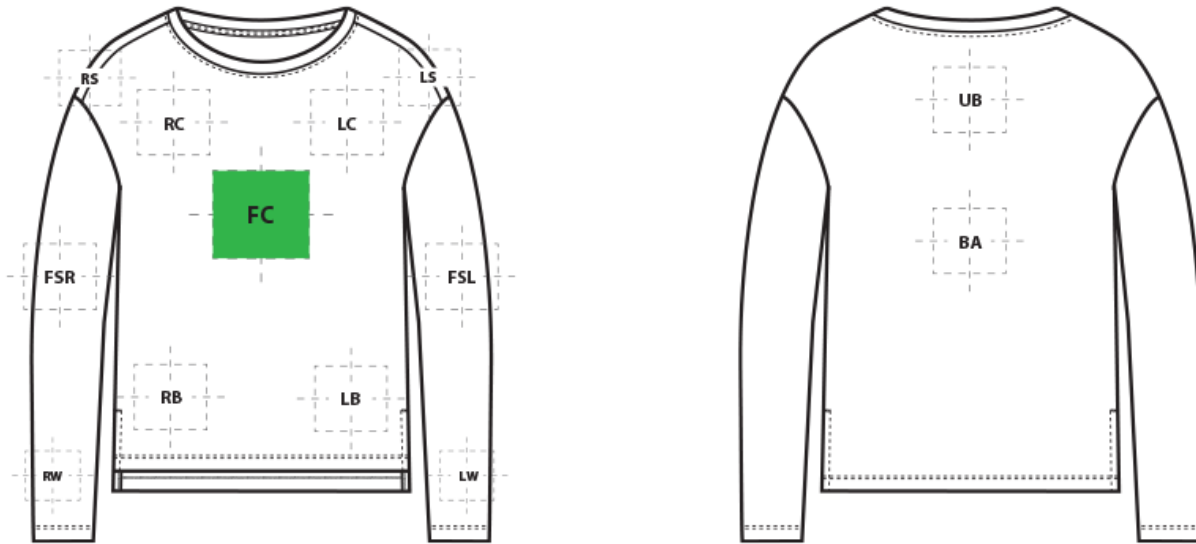


# DECORATION SPEC SHEET



MM3013 Mercer+Mettle<sup>#</sup> Women's Stretch Drop Shoulder Pullover



## FRONT DECORATION DIMENSIONS

Label	Description	Dimensions	Priority
FC	Full Chest	10"Hx12"W	Primary
LB	Left Bottom	4"Hx4"W	
LC	Left Chest	4"Hx4"W	
RB	Right Bottom	4"Hx4"W	
RC	Right Chest	4"Hx4"W	

## BACK DECORATION DIMENSIONS

BA	Back	14"Hx14"W	
UB	Upper Back	4"Hx14"W	

## SLEEVE DECORATION DIMENSIONS

FSL	Full Sleeve Left	4"H x 14"W	
FSR	Full Sleeve Right	4"H x 14"W	
LS	Left Shoulder	4"H x 4"W	
LW	Left Wrist	4"Hx4"W	
RS	Right Shoulder	4"H x 4"W	
RW	Right Wrist	4"Hx4"W	

# DECORATION SPEC SHEET



## MM3013 Mercer+Mettle<sup>#</sup> Women's Stretch Drop Shoulder Pullover

Decoration range is dependent on product, decoration method and equipment used. Allow for 1/8" per size. Sizing is based off: Adult-L, Women's-M, Youth-L, Girls-M. Please consult with your decorator or supplier.

### DECORATION TECHNIQUES

---



**EMBROIDERY**



**SCREEN PRINTING**



**HEAT TRANSFERS**

### ESSENTIAL PRODUCT INFORMATION

---

### TIPS FROM OUR EXPERTS BY DECORATION TECHNIQUE

---



#### **EMBROIDERY**

Embroidery is the art of embellishing a piece of apparel with a needle and thread or yarn creating stunning visual representations of various types of art. This is achieved by converting logos in a digitizing software and using various stitch patterns, angles, density and stitch types to create depth, movement and detail. Thread can be made from many materials. The most commonly used threads are polyester and rayon. There are also options such as metallic, cotton, nylon, silk and even Nomex thread for fire resistance. Embroidery has a very high-perceived value and is popular for use on most apparel, bags, hats, luggage, blankets and more!



#### **SCREEN PRINTING**

An imprinting method in which the image is transferred to the fabric. Ink is squeegeed through a stenciled screen stretched over a frame and then cured in a dryer.

**Low Cure ink, Bleed Blockers needed, \*Please consult with your decorator, equipment, and consumable supplier.\***

# DECORATION SPEC SHEET



## MM3013 Mercer+Mettle<sup>#</sup> Women's Stretch Drop Shoulder Pullover



### HEAT TRANSFERS

A graphic, name and or number applied to a textile with a heat press. Great for quantities of any size, sports name and numbering, fashion, performance wear, print on demand programs and on-site decorating events.

**Low Cure Transfer needed, \*Please consult with your decorator, equipment, and consumable supplier.\***