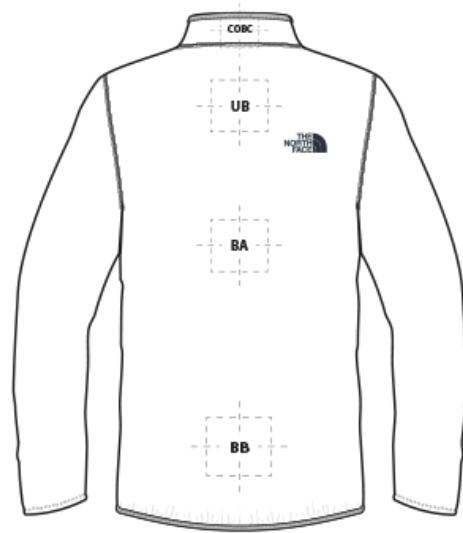
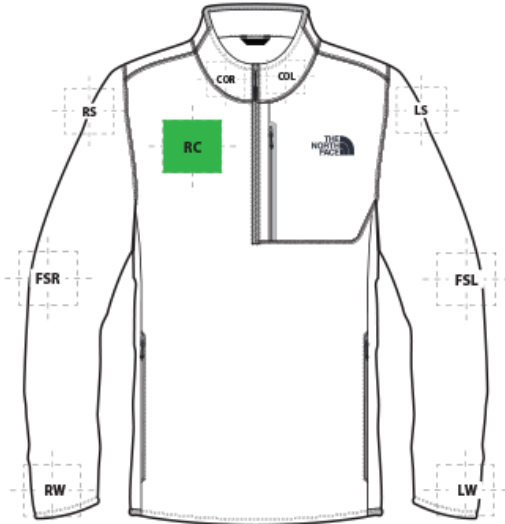


DECORATION SPEC SHEET



NF0A7V62 The North Face® Ladies Skyline Full-Zip Fleece Jacket



FRONT DECORATION DIMENSIONS

FRONT DECORATION DIMENSIONS			
COL	Collar Left	1" H X 4" W	
COR	Collar Right	1" H X 4" W	
RC	Right Chest	4" H X 4" W	Primary

BACK DECORATION DIMENSIONS

BACK DECORATION DIMENSIONS			
BA	Back	12" H X 12" W	
BB	Back Bottom	4" H X 12" W	
COBC	Collar Back	1" H X 4" W	
UB	Upper Back	4" H X 12" W	

SLEEVE DECORATION DIMENSIONS

SLEEVE DECORATION DIMENSIONS			
FSL	Full Sleeve Left	4" H X 14" W	
FSR	Full Sleeve Right	4" H X 14" W	
LS	Left Shoulder	4" H X 4" W	
LW	Left Wrist	4" H X 4" W	
RS	Right Shoulder	4" H X 4" W	
RW	Right Wrist	4" H X 4" W	

DECORATION SPEC SHEET



NF0A7V62 The North Face® Ladies Skyline Full-Zip Fleece Jacket

Decoration range is dependent on product, decoration method and equipment used. Allow for 1/8" per size. Sizing is based off: Adult-L, Women's-M, Youth-L, Girls-M. Please consult with your decorator or supplier.

DECORATION TECHNIQUES



EMBROIDERY



SCREEN PRINTING



HEAT TRANSFERS

ESSENTIAL PRODUCT INFORMATION

TIPS FROM OUR EXPERTS BY DECORATION TECHNIQUE



EMBROIDERY

Embroidery is the art of embellishing a piece of apparel with a needle and thread or yarn creating stunning visual representations of various types of art. This is achieved by converting logos in a digitizing software and using various stitch patterns, angles, density and stitch types to create depth, movement and detail. Thread can be made from many materials. The most commonly used threads are polyester and rayon. There are also options such as metallic, cotton, nylon, silk and even Nomex thread for fire resistance. Embroidery has a very high-perceived value and is popular for use on most apparel, bags, hats, luggage, blankets and more!

Follow your standard equipment and consumables guidelines for this product and fabric.



SCREEN PRINTING

An imprinting method in which the image is transferred to the fabric. Ink is squeegeed through a stenciled screen stretched over a frame and then cured in a dryer.

Low-cure poly inks are required. Grey or black bleed blockers may be necessary.

Avoid hot stacking when decorating 100% polyester, blends, and pigment dye fabrics.

Do not use catch bins to avoid potential ghosting, zebra striping or dye migration.

Do not package product until completely cool. Cooling stations are recommended.

DECORATION SPEC SHEET



NF0A7V62 The North Face[®] Ladies Skyline Full-Zip Fleece Jacket



HEAT TRANSFERS

A graphic, name and or number applied to a textile with a heat press. Great for quantities of any size, sports name and numbering, fashion, performance wear, print on demand programs and on-site decorating events.

Heat transfers with low cure adhesive and bleed blockers are required for this product.

Avoid hot stacking when decorating 100% polyester, blends, and pigment dye fabrics.

Do not package product until completely cool. Cooling stations are recommended.

Heat transfers with an aggressive adhesive are required for stain release, water resistant/waterproof coated and nylon fabrics. Consult with your transfer supplier for recommendations.