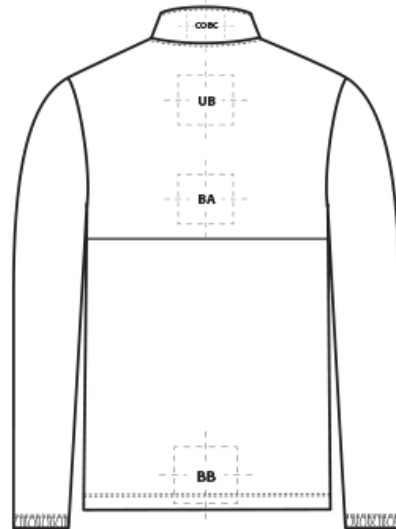
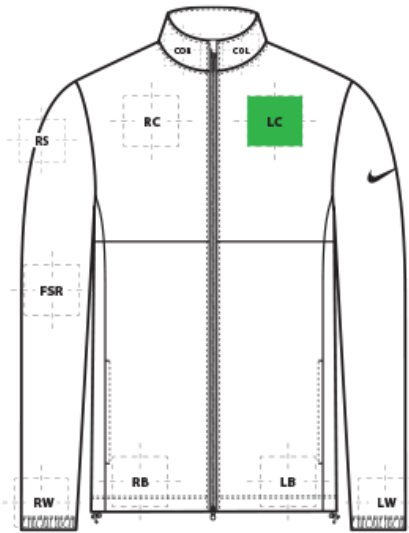


# DECORATION SPEC SHEET



## NKDX6716 Nike Storm-FIT Full-Zip Jacket



### FRONT DECORATION DIMENSIONS

<b>COL</b>	Collar Left	1" H X 4" W	
<b>COR</b>	Collar Right	1" H X 4" W	
<b>LB</b>	Left Bottom	4" H X 4" W	
<b>LC</b>	Left Chest	4" H X 4" W	Primary
<b>RB</b>	Right Bottom	4" H X 4" W	
<b>RC</b>	Right Chest	4" H X 4" W	

### BACK DECORATION DIMENSIONS

<b>BA</b>	Back	12" H X 12" W	
<b>BB</b>	Back Bottom	4" H X 12" W	
<b>COBC</b>	Collar Back	1" H X 4" W	
<b>UB</b>	Upper Back	4" H X 12" W	

### SLEEVE DECORATION DIMENSIONS

<b>FSR</b>	Full Sleeve Right	4" W x 14" H	
<b>LW</b>	Left Wrist	4" H X 4" W	
<b>RS</b>	Right Shoulder	4" H X 4" W	
<b>RW</b>	Right Wrist	4" H X 4" W	

# DECORATION SPEC SHEET



## NKDX6716 Nike Storm-FIT Full-Zip Jacket

Decoration range is dependent on product, decoration method and equipment used. Allow for 1/8" per size. Sizing is based off: Adult-L, Women's-M, Youth-L, Girls-M. Please consult with your decorator or supplier.

### DECORATION TECHNIQUES

---



**EMBROIDERY**



**SCREEN PRINTING**



**HEAT TRANSFERS**

### ESSENTIAL PRODUCT INFORMATION

---

**Due to the nature of 100% polyester fabrics, special care must be taken throughout the decoration process when heat is applied for curing. Please consult with your decorator or material supplier.**

### TIPS FROM OUR EXPERTS BY DECORATION TECHNIQUE

---



#### **EMBROIDERY**

Embroidery is the art of embellishing a piece of apparel with a needle and thread or yarn creating stunning visual representations of various types of art. This is achieved by converting logos in a digitizing software and using various stitch patterns, angles, density and stitch types to create depth, movement and detail. Thread can be made from many materials. The most commonly used threads are polyester and rayon. There are also options such as metallic, cotton, nylon, silk and even Nomex thread for fire resistance. Embroidery has a very high-perceived value and is popular for use on most apparel, bags, hats, luggage, blankets and more!

**Follow your standard equipment and consumables guidelines for this product and fabric.**



#### **SCREEN PRINTING**

An imprinting method in which the image is transferred to the fabric. Ink is squeegeed through a stenciled screen stretched over a frame and then cured in a dryer.

**Follow your standard equipment and consumables guidelines for this product and fabric.**

# DECORATION SPEC SHEET



## NKDX6716 Nike Storm-FIT Full-Zip Jacket



### HEAT TRANSFERS

A graphic, name and or number applied to a textile with a heat press. Great for quantities of any size, sports name and numbering, fashion, performance wear, print on demand programs and on-site decorating events.

**Follow your standard equipment and consumables guidelines for this product and fabric.**