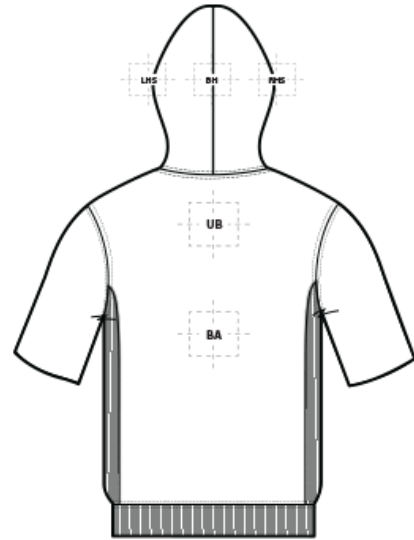
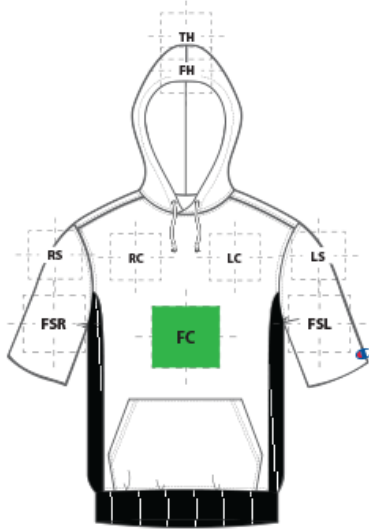


# DECORATION SPEC SHEET



## S101SS Champion® Reverse Weave® Short Sleeve Hooded Sweatshirt



### FRONT DECORATION DIMENSIONS

FRONT DECORATION DIMENSIONS			
<b>FC</b>	Full Chest	14"Hx 14"W	Primary
<b>LC</b>	Left Chest	4"HX4"W	
<b>RC</b>	Right Chest	4"HX4"W	
<b>TH</b>	Top Hood	2"H x 2"W	

### BACK DECORATION DIMENSIONS

BACK DECORATION DIMENSIONS			
<b>BA</b>	Back	14"H x 14"W	
<b>UB</b>	Upper Back	6"HX14"W	

### SLEEVE DECORATION DIMENSIONS

SLEEVE DECORATION DIMENSIONS			
<b>FSL</b>	Full Sleeve Left	4"H x 14"W	
<b>FSR</b>	Full Sleeve Right	4"H x 14"W	
<b>LS</b>	Left Shoulder	4"HX4"W	
<b>RS</b>	Right Shoulder	4"HX4"W	

### HOOD DECORATION DIMENSIONS

HOOD DECORATION DIMENSIONS			
<b>BH</b>	Back Hood	3'HX2"W	
<b>FH</b>	Front Hood	3'HX3"W	

# DECORATION SPEC SHEET



## S101SS Champion<sup>®</sup> Reverse Weave<sup>®</sup> Short Sleeve Hooded Sweatshirt

LHS	Left Hood Side	3"HX3"W	
RHS	Right Hood Side	3"HX3"W	

Decoration range is dependent on product, decoration method and equipment used. Allow for 1/8" per size. Sizing is based off: Adult-L, Women's-M, Youth-L, Girls-M. Please consult with your decorator or supplier.

### DECORATION TECHNIQUES



SCREEN PRINTING



HEAT TRANSFERS



PAD PRINTING

### ESSENTIAL PRODUCT INFORMATION

Due to the nature of cotton/polyester blends, special care must be taken throughout the decoration process when heat is applied for curing. Please consult with your decorator or material supplier.

### TIPS FROM OUR EXPERTS BY DECORATION TECHNIQUE



#### SCREEN PRINTING

An imprinting method in which the image is transferred to the fabric. Ink is squeegeed through a stenciled screen stretched over a frame and then cured in a dryer.

**Low-cure poly inks are required. Grey or black bleed blockers may be necessary. For best results, due to the fabric weight and possible moisture retention, preheating or tunnel drying may be needed prior to production.**



#### HEAT TRANSFERS

A graphic, name and or number applied to a textile with a heat press. Great for quantities of any size, sports name and numbering, fashion, performance wear, print on demand programs and on-site decorating events.

**Heat transfers with low cure adhesive and bleed blockers are required for this product. For best results, due to the fabric weight and possible moisture retention, preheating or tunnel drying may be needed prior to production.**

# DECORATION SPEC SHEET



## S101SS Champion<sup>®</sup> Reverse Weave<sup>®</sup> Short Sleeve Hooded Sweatshirt



### **PAD PRINTING**

Pad printing uses a soft silicone pad to transfer an image taken from a plate etched with a reversed logo, similar to a rubber stamp. Images can be very small and detailed and can be up to 5½ inches in diameter. Pad printers are capable of printing up to six colors, however most industry printers use one to two colors at most when printing on apparel. Pad printing is a popular trend for tagless label printing. The prints are soft, durable and capable of high and low volume production. Pad printing is great for sling bags, totes and other items that are difficult to decorate, as well as styles that are heat sensitive.