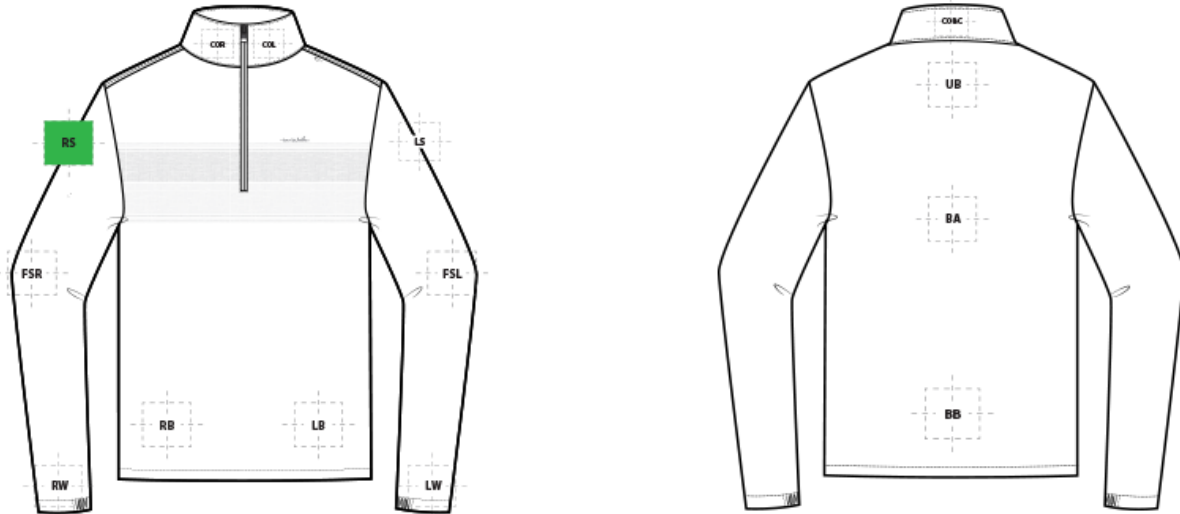


# DECORATION SPEC SHEET



## TM1MZ340 TravisMathew Balboa Chest Stripe 1/4-Zip



### FRONT DECORATION DIMENSIONS

<b>COL</b>	Collar Left	1" H X 4" W	
<b>COR</b>	Collar Right	1" H X 4" W	
<b>LB</b>	Left Bottom	4" H X 4" W	
<b>RB</b>	Right Bottom	4" H X 4" W	

### BACK DECORATION DIMENSIONS

<b>BA</b>	Back	14" H X 14" W	
<b>BB</b>	Back Bottom	6" H X 14" W	
<b>COBC</b>	Collar Back	1" H X 4" W	
<b>UB</b>	Upper Back	4" H X 14" W	

### SLEEVE DECORATION DIMENSIONS

<b>FSL</b>	Full Sleeve Left	4" W x 14" H	
<b>FSR</b>	Full Sleeve Right	4" W x 14" H	
<b>LS</b>	Left Shoulder	4" H X 4" W	
<b>LW</b>	Left Wrist	4" H X 4" W	
<b>RS</b>	Right Shoulder	4" H X 4" W	Primary
<b>RW</b>	Right Wrist	4" H X 4" W	

# DECORATION SPEC SHEET



## TM1MZ340 TravisMathew Balboa Chest Stripe 1/4-Zip

Decoration range is dependent on product, decoration method and equipment used. Allow for 1/8" per size. Sizing is based off: Adult-L, Women's-M, Youth-L, Girls-M. Please consult with your decorator or supplier.

### DECORATION TECHNIQUES

---



**EMBROIDERY**



**SCREEN PRINTING**



**HEAT TRANSFERS**

### ESSENTIAL PRODUCT INFORMATION

---

**Due to the nature of 100% polyester fabrics, special care must be taken throughout the decoration process when heat is applied for curing. Please consult with your decorator or material supplier.**

### TIPS FROM OUR EXPERTS BY DECORATION TECHNIQUE

---



#### **EMBROIDERY**

Embroidery is the art of embellishing a piece of apparel with a needle and thread or yarn creating stunning visual representations of various types of art. This is achieved by converting logos in a digitizing software and using various stitch patterns, angles, density and stitch types to create depth, movement and detail. Thread can be made from many materials. The most commonly used threads are polyester and rayon. There are also options such as metallic, cotton, nylon, silk and even Nomex thread for fire resistance. Embroidery has a very high-perceived value and is popular for use on most apparel, bags, hats, luggage, blankets and more!

**Follow your standard equipment and consumables guidelines for this product and fabric.**



#### **SCREEN PRINTING**

An imprinting method in which the image is transferred to the fabric. Ink is squeegeed through a stenciled screen stretched over a frame and then cured in a dryer.

**Low-cure poly inks are required. Grey or black bleed blockers may be necessary.**

# DECORATION SPEC SHEET



## TM1MZ340 TravisMathew Balboa Chest Stripe 1/4-Zip



### HEAT TRANSFERS

A graphic, name and or number applied to a textile with a heat press. Great for quantities of any size, sports name and numbering, fashion, performance wear, print on demand programs and on-site decorating events.

**Heat transfers with low cure adhesive and bleed blockers are required for this product.**