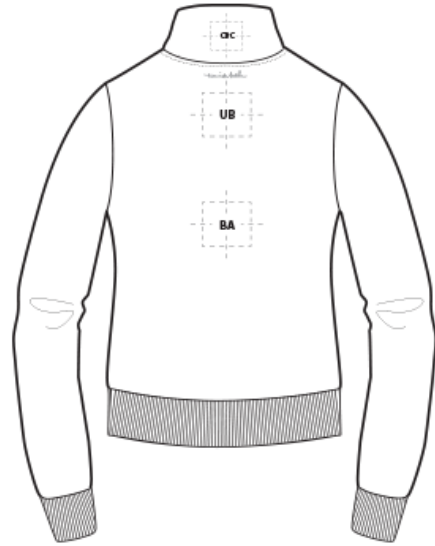
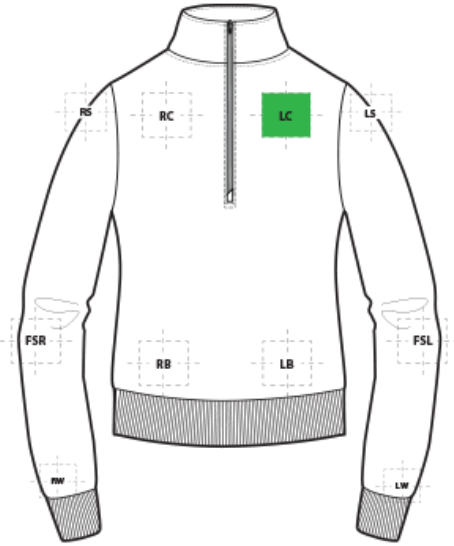


# DECORATION SPEC SHEET



## TM1WW003 TravisMathew Ladies Crestview 1/4-Zip



### FRONT DECORATION DIMENSIONS

FRONT DECORATION DIMENSIONS			
<b>LB</b>	Left Bottom	4"Hx4"W	
<b>LC</b>	Left Chest	4"Hx4"W	Primary
<b>RB</b>	Right Bottom	4"Hx4"W	
<b>RC</b>	Right Chest	4"Hx4"W	

### BACK DECORATION DIMENSIONS

BACK DECORATION DIMENSIONS			
<b>BA</b>	Back	10"Hx10"W	
<b>CBC</b>	Collar Back Center	1"Hx3"W	
<b>UB</b>	Upper Back	4"Hx10"W	

### SLEEVE DECORATION DIMENSIONS

SLEEVE DECORATION DIMENSIONS			
<b>FSL</b>	Full Sleeve Left	4"H x 14"W	
<b>FSR</b>	Full Sleeve Right	4"H x 14"W	
<b>LS</b>	Left Shoulder	4"H x 4"W	
<b>LW</b>	Left Wrist	4"H x 4"W	
<b>RS</b>	Right Shoulder	4"H x 4"W	
<b>RW</b>	Right Wrist	4"H x 4"W	

# DECORATION SPEC SHEET



## TM1WW003 TravisMathew Ladies Crestview 1/4-Zip

Decoration range is dependent on product, decoration method and equipment used. Allow for 1/8" per size. Sizing is based off: Adult-L, Women's-M, Youth-L, Girls-M. Please consult with your decorator or supplier.

### DECORATION TECHNIQUES

---



**EMBROIDERY**



**SCREEN PRINTING**



**HEAT TRANSFERS**

### ESSENTIAL PRODUCT INFORMATION

---

**Due to the nature of tri blends, special care must be taken throughout the decoration process when heat is applied for curing. Please consult with your decorator or material supplier.**

### TIPS FROM OUR EXPERTS BY DECORATION TECHNIQUE

---



#### **EMBROIDERY**

Embroidery is the art of embellishing a piece of apparel with a needle and thread or yarn creating stunning visual representations of various types of art. This is achieved by converting logos in a digitizing software and using various stitch patterns, angles, density and stitch types to create depth, movement and detail. Thread can be made from many materials. The most commonly used threads are polyester and rayon. There are also options such as metallic, cotton, nylon, silk and even Nomex thread for fire resistance. Embroidery has a very high-perceived value and is popular for use on most apparel, bags, hats, luggage, blankets and more!



#### **SCREEN PRINTING**

An imprinting method in which the image is transferred to the fabric. Ink is squeegeed through a stenciled screen stretched over a frame and then cured in a dryer.

**Low Cure ink, Bleed Blockers needed, \*Please consult with your decorator, equipment, and consumable supplier.\***

# DECORATION SPEC SHEET



TM1WW003 TravisMathew Ladies Crestview 1/4-Zip



## HEAT TRANSFERS

A graphic, name and or number applied to a textile with a heat press. Great for quantities of any size, sports name and numbering, fashion, performance wear, print on demand programs and on-site decorating events.

**Low Cure Transfer needed, \*Please consult with your decorator, equipment, and consumable supplier.\***