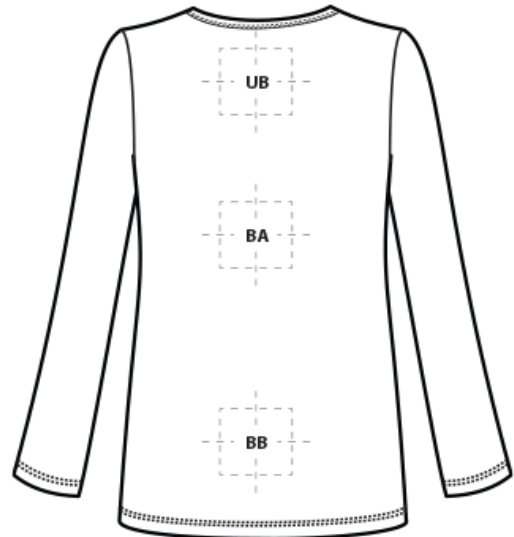
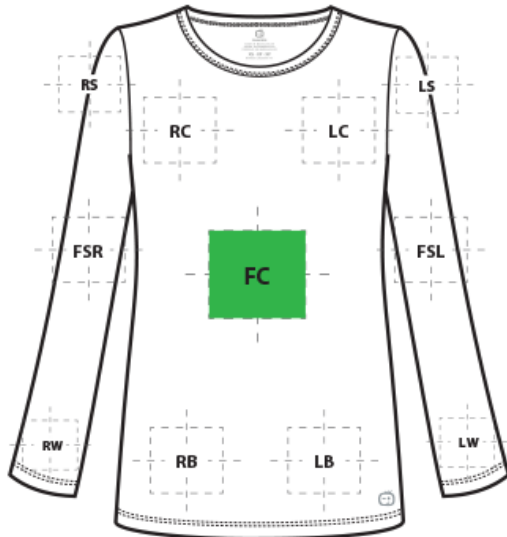


DECORATION SPEC SHEET



WW4029 WonderWink® Women's Long Sleeve Layer Tee



FRONT DECORATION DIMENSIONS

| FRONT DECORATION DIMENSIONS | | | |
|-----------------------------|--------------|--------------|---------|
| FC | Full Chest | 18"H x 12" W | Primary |
| LB | Left Bottom | 4"H x 4"W | |
| LC | Left Chest | 4"H x 4"W | |
| RB | Right Bottom | 4"H x 4"W | |
| RC | Right Chest | 4"H x 4"W | |

BACK DECORATION DIMENSIONS

| BACK DECORATION DIMENSIONS | | | |
|----------------------------|-------------|-------------|--|
| BA | Back | 20"H X 14"W | |
| BB | Back Bottom | 6"H X 14"W | |
| UB | Upper Back | 4"H X 12"W | |

SLEEVE DECORATION DIMENSIONS

| SLEEVE DECORATION DIMENSIONS | | | |
|------------------------------|-------------------|------------|--|
| FSL | Full Sleeve Left | 4"H X 20"W | |
| FSR | Full Sleeve Right | 4"H X 20"W | |
| LS | Left Shoulder | 4"H x 4"W | |
| LW | Left Wrist | 3"H x 3"W | |
| RS | Right Shoulder | 4"H x 4"W | |
| RW | Right Wrist | 3"H x 3"W | |

DECORATION SPEC SHEET



WW4029 WonderWink® Women's Long Sleeve Layer Tee

migration. Do not package product until completely cool. Cooling stations are recommended.



HEAT TRANSFERS

A graphic, name and or number applied to a textile with a heat press. Great for quantities of any size, sports name and numbering, fashion, performance wear, print on demand programs and on-site decorating events.

Heat transfers with low cure adhesive and bleed blockers are required for this product. Heat transfers with stretch are recommended for this fabric. Avoid hot-stacking when decorating 100% polyester, blends, and pigment dye fabrics. Do not package product until completely cool. Cooling stations are recommended.



PAD PRINTING

Pad printing uses a soft silicone pad to transfer an image taken from a plate etched with a reversed logo, similar to a rubber stamp. Images can be very small and detailed and can be up to 5½ inches in diameter. Pad printers are capable of printing up to six colors, however most industry printers use one to two colors at most when printing on apparel. Pad printing is a popular trend for tagless label printing. The prints are soft, durable and capable of high and low volume production. Pad printing is great for sling bags, totes and other items that are difficult to decorate, as well as styles that are heat sensitive.