



# District® Youth V.I.T.™ Fleece Hoodie DT6100Y

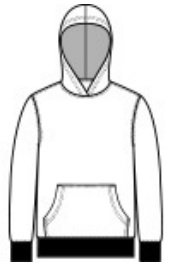


An ideal canvas for decorators, this soft fleece is everything and more at an unbeatable value.

- 8.3-ounce, 65/35 ring spun cotton/polyester
- 100% ring spun cotton face (Solids, Light Heather Grey)
- 60/40 ring spun cotton/polyester (Royal Frost, Heathered Charcoal)
- Jersey-lined, two-piece hood
- Dyed-to-match twill back neck tape
- No draw cord
- Side seamed
- 1x1 rib knit cuffs and hem
- Tear-away label

### CARE INSTRUCTIONS

Machine wash cold with like colors. Only non-chlorine bleach, when needed. Tumble dry low. Warm iron, if necessary.



front



back

### HOW TO MEASURE



#### CHEST WIDTH

Measure under the arm and around the fullest part of the chest with arms down, keeping tape horizontal.

### SIZE CHART

|       | XS    | S     | M     | L     | XL    |
|-------|-------|-------|-------|-------|-------|
| Size  | 4/5   | 6/8   | 10/12 | 14/16 | 18/20 |
| Chest | 22-24 | 25-27 | 28-30 | 30-32 | 32-34 |

### COLOR INFORMATION



Black  
PMS BLACK C



Classic Red  
PMS 200C



Forest Green  
PMS 7736C



Heathered  
Charcoal  
PMS 7540C



Light Heather Grey  
PMS NO MATCH



New Navy  
PMS 533C



Rosewater Pink  
PMS NO MATCH



Royal Frost  
PMS 7684C