

*Eddie Bauer*

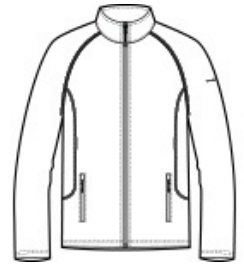
# Eddie Bauer® Smooth Fleece Full-Zip. EB246



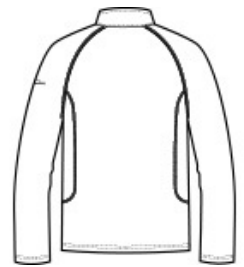
Built for versatility, this smooth-faced, brushed back fleece is the ideal base layer. It has a sleek, low-profile fit and is adaptable to everything from outdoor adventures to indoor comfort. Contrast coverstitch details. Reverse coil zippers. Open cuffs and hem. Front zippered pockets. Contrast Eddie Bauer heat transfer logo on left sleeve. Made of 5.6-ounce, 100% polyester fleece.

**CARE INSTRUCTIONS**

Machine Wash Cold, Inside Out With Like Colors, Do Not Use Fabric Softener, Only Non-Chlorine Bleach When Needed, Tumble Dry Low, Do Not Iron, Do Not Dry Clean.



front



back

**HOW TO MEASURE**



**CHEST WIDTH**

Measure under the arm and around the fullest part of the chest with arms down, keeping tape horizontal.

**SIZE CHART**

	XS	S	M	L	XL	2XL	3XL	4XL
Chest	32-34	35-37	38-40	41-43	44-46	48-50	52-54	55-57

**COLOR INFORMATION**



Black  
PMS NTR BLACK  
C



Cobalt Blue  
PMS 654C



Iron Gate  
PMS 7540C



River Blue Navy  
PMS 533C