

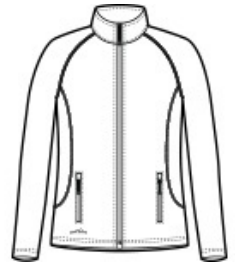


Eddie Bauer® Ladies Smooth Fleece Full-Zip. EB247

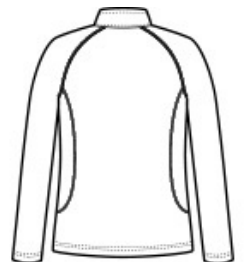
Built for versatility, this smooth-faced, brushed back fleece is the ideal base layer. It has a sleek, low-profile fit and is adaptable to everything from outdoor adventures to indoor comfort. Contrast coverstitch details. Reverse coil zippers. Open cuffs and hem. Front zippered pockets. Contrast Eddie Bauer heat transfer logo on right hem. Made of 5.6-ounce, 100% polyester fleece.

CARE INSTRUCTIONS

Machine Wash Cold, Inside Out With Like Colors, Do Not Use Fabric Softener, Only Non-Chlorine Bleach When Needed, Tumble Dry Low, Do Not Iron, Do Not Dry Clean.



front



back

HOW TO MEASURE



BUST

Measure under the arm and around the fullest part of the bust with arms down, keeping tape horizontal.

SIZE CHART

| | 4XL | XS | S | M | L | XL | 2XL | 3XL |
|------|-------|-------|-------|-------|-------|-------|-------|-------|
| Size | 28/30 | 2 | 4/6 | 8/10 | 12/14 | 16/18 | 20/22 | 24/26 |
| Bust | 50-52 | 32-33 | 34-35 | 36-37 | 38-40 | 41-43 | 44-46 | 47-49 |

COLOR INFORMATION



Black
PMS NTR BLACK
C



Iron Gate
PMS 7540CP



River Blue Navy
PMS 533C