

*Eddie Bauer*

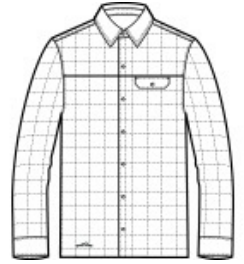
## Eddie Bauer® Shirt Jac. EB502



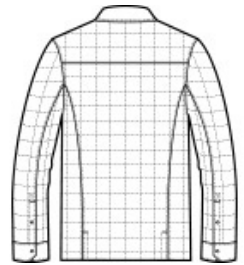
Midweight jacket with armth meets collared shirt style in this shirt jac that blurs the line between the great outdoors and indoors. Snap-front closure and snap cuffs. Drop-in left chest pocket. Contrast Eddie Bauer heat transfer logo on the right hem. Decoration access pocket. Made of 100% polyester fabric and 1.8-ounce, 100% polyester fill. Water-resistant with a PU coating.

### CARE INSTRUCTIONS

Machine Wash Cold, Inside Out With Like Colors, Do Not Use Fabric Softener, Only Non-Chlorine Bleach When Needed, Tumble Dry Low, Do Not Iron, Do Not Dry Clean.



front



back

### HOW TO MEASURE



#### CHEST WIDTH

Measure under the arm and around the fullest part of the chest with arms down, keeping tape horizontal.

### SIZE CHART

	4XL	XS	S	M	L	XL	2XL	3XL
Chest	55-57	32-34	35-37	38-40	41-43	44-46	48-50	52-54

### COLOR INFORMATION



Black  
PMS NTR BLACK  
C



Charcoal Grey  
Heather  
PMS 7540C