

PORT AUTHORITY

# Port Authority® Network Fleece Jacket F422

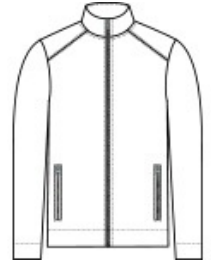


With a classic pique look, this brushed-back fleece has professional style thanks to its sophisticated metal zippers.

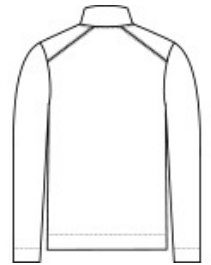
- 9.7-ounce, 58/42 cotton/polyester fleece with pique face and brushed back
- Metal center front zipper
- Metal zippered hand pockets
- Deeper cuffs and hem

### CARE INSTRUCTIONS

Machine Wash Cold With Like Colors. Only Non-Chlorine Bleach When Needed. Tumble Dry Low. Cool Iron If Necessary.



front



back

### HOW TO MEASURE



#### CHEST WIDTH

Measure under the arm and around the fullest part of the chest with arms down, keeping tape horizontal.

### SIZE CHART

	XS	S	M	L	XL	2XL	3XL	4XL
Chest	32-34	35-37	38-40	41-43	44-46	47-49	50-53	54-57

### COLOR INFORMATION



Charcoal  
PMS 432C



Deep Black  
PMS BLACK C



Grey Heather  
PMS 424C