



Our versatile, fully seam-sealed jacket offers outstanding waterproof protection to keep you dry whether you're on the job or on the trail. Folds into a convenient carry pouch for easy, compact storage.

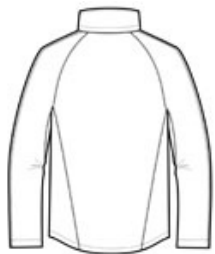
- 100% polyester
- 100% polyester mesh-lined body and hood
- 5000MM fabric w aterproof rating
- 1000G/M2 fabric breathability rating
- Zip-off hood
- Contrast waterproof zippers
- Adjustable self-fabric tab cuffs w ith hook and loop closures
- Front zippered pockets
- Port Pocket™ for decoration access
- Open hem w ith locking draw cord for adjustability
- Draw string carry pouch included

**CARE INSTRUCTIONS**

Machine Wash Cold. Do Not Bleach. Cool Iron If Needed. Do Not Dry Clean.



front



back

**HOW TO MEASURE**



**CHEST WIDTH**

Measure under the arm and around the fullest part of the chest w ith arms down n, keeping tape horizontal.

**SIZE CHART**

	XS	S	M	L	XL	2XL	3XL	4XL	5XL	6XL
Chest	32-34	35-37	38-40	41-43	44-46	47-49	50-53	54-57	58-60	61-63

**COLOR INFORMATION**

Black PMS NTR BLACK C	Dark Grey Heather PMS HEATHERED	Deep Red PMS 201C	Direct Blue PMS 2144C	Engine Red PMS 200C	Magnet PMS COOL GRAY 11C	Orange Crush PMS NO MATCH	Slicker Yellow PMS 1235C	True Navy PMS 5255C	Vine Green PMS 7741C