



Sporty colorblocking and a 1/2-zip front make this soft anorak an excellent alternative to a wind shirt or jacket.

- 100% polyester shell
- 100% polyester jersey lining with mesh insets at gussets for added breathability
- Three-panel hood with draw cord and toggle
- Raglan sleeves
- Front pouch pocket
- Articulated elbows for greater mobility
- Half elastic, half self-fabric cuffs for comfort
- Left side seam zipper for easy on/off
- Draw cord hem with toggle

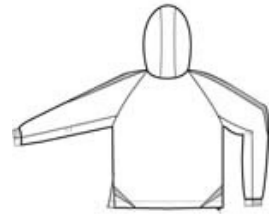
*\*Please note: This product is transitioning from woven labels to tag-free labels. Your order may contain a combination of both labels*

**CARE INSTRUCTIONS**

Machine wash cold. Gentle cycle with like colors. Use mild detergent, remove immediately. Do not allow to lay on itself when wet. Do not bleach. Tumble dry low. Cool iron, if needed.

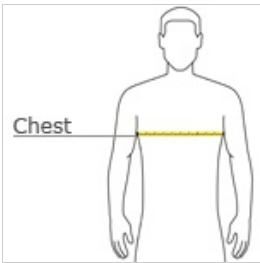


front



back

**HOW TO MEASURE**



**CHEST WIDTH**

Measure under the arm and around the fullest part of the chest with arms down, keeping tape horizontal.

**SIZE CHART**

	XS	S	M	L	XL	2XL	3XL	4XL	5XL	6XL
Chest	32-34	35-37	38-40	41-43	44-46	47-49	50-53	54-57	58-60	61-63

**COLOR INFORMATION**



Black/ White  
PMS NTR BLACK  
C



Forest Green/  
White  
PMS 553C



Kelly Green/ White  
PMS 341C



Maroon/ White  
PMS 504C



True Navy/ White  
PMS 533C



True Red/ White  
PMS 200C



True Royal/ White  
PMS 7687C