



Our C-FREE™ carbon neutral polos not only feel good, they do good. With C-FREE, we measured the carbon footprint of these styles and we're neutralizing their impact with Carbonfree® certification.

- 4.9-ounce, 100% recycled polyester jersey
- Snag-proof
- Moisture-wicking
- Self-fabric collar
- 3-button placket
- Grey buttons include 26% recycled content
- Side vents

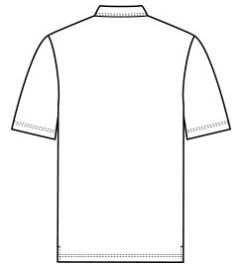
Due to the nature of polyester performance fabrics, special care must be taken throughout the printing process.

CARE INSTRUCTIONS

Machine Wash Cold With Like Colors. Do Not Use Fabric Softener. Do Not Bleach. Tumble Dry Low. Remove Promptly. Cool Iron If Needed.

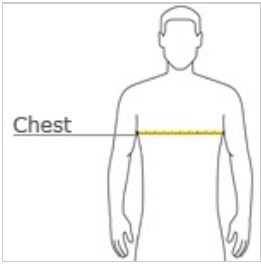


front



back

HOW TO MEASURE



CHEST WIDTH

Measure under the arm and around the fullest part of the chest with arms down, keeping tape horizontal.

SIZE CHART

	XS	S	M	L	XL	2XL	3XL	4XL
Chest	32-34	35-37	38-40	41-43	44-46	47-49	50-53	54-57

COLOR INFORMATION



Deep Black
PMS BLACK C



Grey Steel
PMS NO MATCH



True Navy
PMS 533C



True Royal
PMS 7687C