

PORT AUTHORITY.

Port Authority® Ladies Textured Hooded Soft Shell Jacket. L706



Our hooded soft shell stands up to the elements and stands out with texture and bar tack details. Highly breathable with stretch, this wind-resistant, water-repellent jacket is just right for the workday or the weekend. A hood and zippered sleeve vents add function and up-to-the-minute appeal.

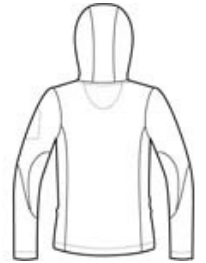
- 96/4 poly/spandex woven shell bonded to a water-resistant film insert and a 100% polyester microfleece
- 1000MM fabric waterproof rating
- 1000G/M² fabric breathability rating
- Hood with locking draw cord for adjustability
- Storm flap with chin guard
- Ergonomic zipper pulls
- Princess seams
- Zippered chest and sleeve pockets with contrast bar tack
- Front zippered pockets with contrast bar tack
- Open hem

CARE INSTRUCTIONS

Machine wash cold. Do not dry clean. Do not iron. Do not bleach. Do not tumble dry.

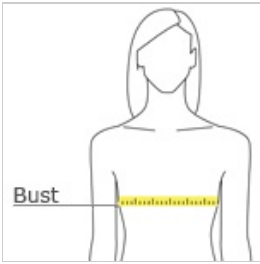


front



back

HOW TO MEASURE



BUST

Measure under the arm and around the fullest part of the bust with arms down, keeping tape horizontal.

SIZE CHART

	S	M	XS	XXL	3XL	4XL	L	XL
Size	4/6	8/10	2	20/22	24/26	28/30	12/14	16/18
Bust	35-36	37-38	32-34	45-47	48-51	52-55	39-41	42-44

COLOR INFORMATION



Black/ Engine Red
PMS NTR BLACK
C



Charcoal/ Lemon
Yellow
PMS 426C