

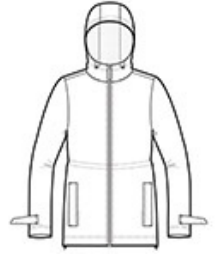
PORT AUTHORITY

Port Authority® Ladies Northwest Slicker. L7710

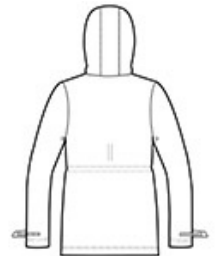


We reinvented our classic rain jacket with this critically seam-sealed slicker that features water resistance, a soft hand feel and reflective details for enhanced visibility and a modern look.

- 100% PU-coated polyester
- 100% polyester mesh-lined body and hood
- 100% polyester-lined sleeves
- 1500MM fabric waterproof rating
- Attached hood with adjustable locking draw cord
- Molded zipper
- Grommets for breathability under arms
- Longer length with adjustable locking draw cord waist
- Adjustable self-fabric tab cuffs with hook and loop closures and reflective detail
- Front zippered pockets with reflective detail
- Port Pocket™ for decoration access
- Open hem with adjustable locking draw cord
- Reflective details at back



front

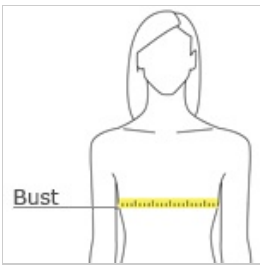


back

CARE INSTRUCTIONS

Machine wash cold. Only non-chlorine bleach when needed. Line dry. Do not iron. Do not dry clean.

HOW TO MEASURE



BUST

Measure under the arm and around the fullest part of the bust with arms down, keeping tape horizontal.

SIZE CHART

	XS	S	M	L	XL	XXL	3XL	4XL
Size	2	4/6	8/10	12/14	16/18	20/22	24/26	28/30
Bust	32-34	35-36	37-38	39-41	42-44	45-47	48-51	52-55

COLOR INFORMATION



Black
PMS NTR BLACK
C



Isla Blue
PMS 631C



Navy
PMS 532C



Northern Grey
PMS 424C