



Our C-FREE™ carbon neutral polos not only feel good, they do good. With C-FREE, we measured the carbon footprint of these styles and we're neutralizing their impact with Carbonfree® certification.

- 4.9-ounce, 100% recycled polyester jersey
- Snag-proof
- Moisture-wicking
- Self-fabric collar
- Grey buttons include 26% recycled content
- Side vents
- 5-button placket
- Rounded hem

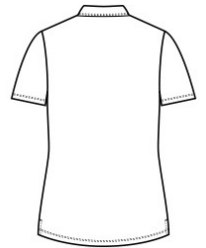
*Due to the nature of polyester performance fabrics, special care must be taken throughout the printing process.*

**CARE INSTRUCTIONS**

Machine Wash Cold With Like Colors. Do Not Use Fabric Softener. Do Not Bleach. Tumble Dry Low. Remove Promptly. Cool Iron If Needed.



front



back

**HOW TO MEASURE**



**BUST**

Measure under the arm and around the fullest part of the bust with arms down, keeping tape horizontal.

**SIZE CHART**

	XS	S	M	L	XL	XXL	3XL	4XL
Size	2	4/6	8/10	12/14	16/18	20/22	24/26	28/30
Bust	32-34	35-36	37-38	39-41	42-44	45-47	48-51	52-55

**COLOR INFORMATION**



Deep Black  
PMS BLACK C



Grey Steel  
PMS NO MATCH



True Navy  
PMS 533C



True Royal  
PMS 7687C