



Smart, stylish and made for layering night or day, fleece jackets blend a sport-inspired shape with a casual-cool attitude. They offer all the traditional bomber design cues, like rib knit collar and cuffs, with a more style-forward, streamlined fit.

**Fabric+Weight**

- 8.3-ounce, 100% double-knit polyester

**Features+Benefits**

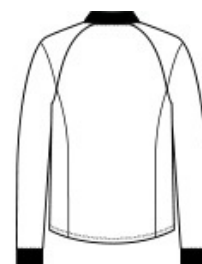
- Easy care
- Rib knit collar and cuffs
- Exposed zipper with matte black pull
- Front pockets

**CARE INSTRUCTIONS**

Turn Garment Inside Out. Machine Wash Cold With Like Colors. Do Not Use Fabric Softener. Do Not Bleach. Tumble Dry Low. Remove Promptly. Cool Iron. If Necessary.

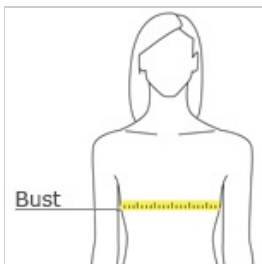


front



back

**HOW TO MEASURE**



**BUST**

Measure under the arm and around the fullest part of the bust with arms down, keeping tape horizontal.

**SIZE CHART**

	XS	S	M	L	XL	2XL	3XL	4XL
Size	2	4/6	8/10	12/14	16/18	20/22	24/26	28/30
Bust	32-34	35-36	37-38	39-41	42-44	45-47	48-51	52-55

**COLOR INFORMATION**



Anchor Grey  
PMS 426C



Deep Black  
PMS BLACK C



Night Navy  
PMS 532C



Townsend Green  
PMS NO MATCH