



MERCER+METTLE™

# Mercer+Mettle™ Stretch 1/4-Zip Pullover MM3010

Add more lifestyle to your work style with this French terry classic. It features refined details like side seaming and back yoke piecing for an easy fit. Other features include turned cuffs and hem, and a dyed-to-match reverse coil zipper for a modern-lux aesthetic.

### Fabric+Weight

- 7.4-ounce, 53/41/6 rayon/poly/spandex French terry

### Features+Benefits

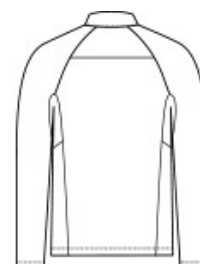
- Mock neck
- Dyed-to-match reverse coil zipper and matte black pull
- Side seam piecing
- Arm seaming
- Back yoke piecing
- Turned cuffs and hem

### CARE INSTRUCTIONS

Turn Garment Inside Out. Machine Wash Cold With Like Colors. Do Not Use Fabric Softener. Do Not Bleach. Tumble Dry Low. Remove Promptly. Cool Iron. If Necessary.

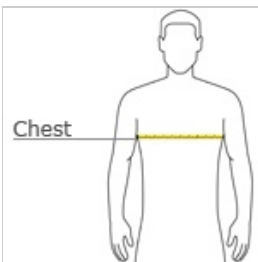


front



back

### HOW TO MEASURE



#### CHEST WIDTH

Measure under the arm and around the fullest part of the chest with arms down, keeping tape horizontal.

### SIZE CHART

	XS	S	M	L	XL	2XL	3XL	4XL
Chest	32-34	35-37	38-40	41-43	44-47	48-51	52-56	57-61

### COLOR INFORMATION



Anchor Grey  
PMS 426C



Blue Note  
PMS NO MATCH



Deep Black  
PMS BLACK C



Gusty Grey  
PMS COOL GREY  
8C



Night Navy  
PMS 532C