



OGIO® Tread Polo. OG135

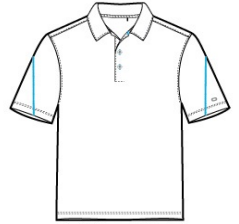


This polo dares to tread on the edge w ith its slightly linear stripe and black pinpoint dot appearance.

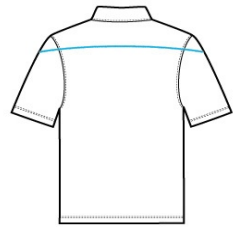
- 4.6-ounce, 73/21/6 cotton/poly/spandex jacquard jersey w ith stay-cool w icking technology
- OGIO heat transfer label for tag-free comfort
- Self-fabric collar
- 3-button placket w ith flat metal buttons
- Contrast coverstitching on back yoke and sleeves
- Set-in, open hem sleeves
- Rubber heat transfer O on left sleeve

CARE INSTRUCTIONS

Machine w ash cold w ith like colors. Do not bleach. Tumble dry low . Cool iron. Do not use fabric softener. Do not dry clean.



front



back

HOW TO MEASURE



CHEST WIDTH

Measure under the arm and around the fullest part of the chest w ith arms dow n, keeping tape horizontal.

SIZE CHART

	XS	S	M	L	XL	2XL	3XL	4XL
Chest	32-34	35-37	38-40	41-43	44-46	47-49	50-53	54-57

COLOR INFORMATION



Blacktop Heather
PMS 7540C



Blue Heather
PMS NO MATCH



Grey Heather
PMS NO MATCH