



With sporty raglan sleeves, wind-resistance and water-resistance, this soft shell is made to move with you—regardless of the weather.

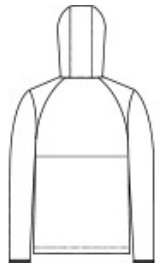
- 100% polyester knit shell with a durable water-repellent (DWR) coating bonded to a water-resistant film insert and a 100% polyester brushed tricot interior
- 5000MM fabric waterproof rating
- 5000G/M2 fabric breathability rating
- Three-panel hood with draw cord and toggles
- Raglan sleeves
- Coated reverse coil center front zipper
- Front reverse coil zippered pockets
- Elastic binding at cuffs
- Open hem

**CARE INSTRUCTIONS**

Machine Wash Cold With Like Colors. Do Not Bleach. Do Not Use Fabric Softener. Tumble Dry Low. Do Not Iron.



front



back

**HOW TO MEASURE**



**CHEST WIDTH**

Measure under the arm and around the fullest part of the chest with arms down, keeping tape horizontal.

**SIZE CHART**

|       | XS    | S     | M     | L     | XL    | 2XL   | 3XL   | 4XL   |
|-------|-------|-------|-------|-------|-------|-------|-------|-------|
| Chest | 32-34 | 35-37 | 38-40 | 41-43 | 44-46 | 47-49 | 50-53 | 54-57 |

**COLOR INFORMATION**



Deep Black  
PMS BLACK C



Graphite  
PMS 432C



True Navy  
PMS 533C